

LOCATION: MACPHERSON COMMUNITY CLUB | 400 PAYA LEBAR WAY, S (379131)

# 1<sup>ST</sup> SHOW OF 2025

**22**ND FEBRUARY 2025 (SATURDAY) &

**23**RD FEBRUARY 2025 (SUNDAY)

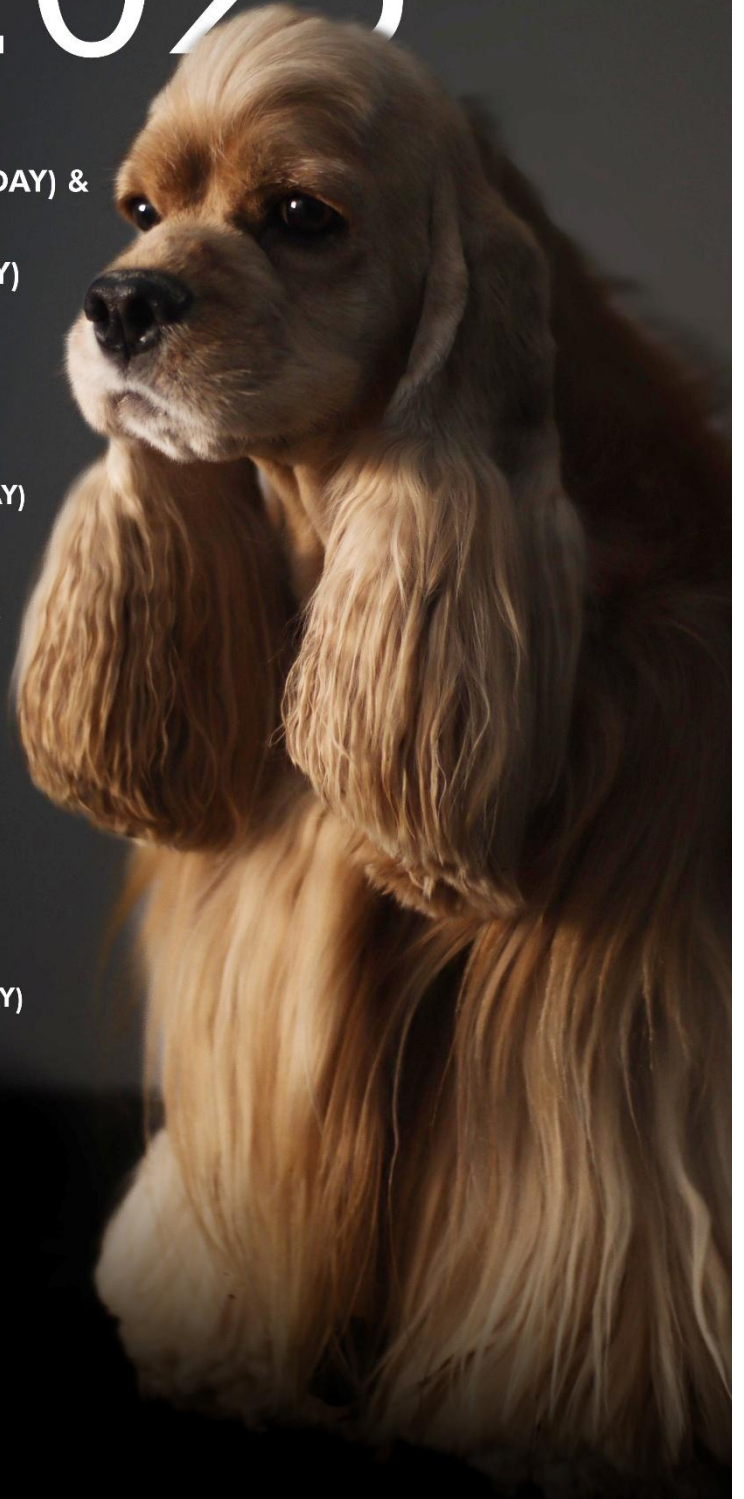
**253**RD SKC  
CHAMPIONSHIP DOG SHOW (SATURDAY)  
JUDGE: MR. FAN BU (CHINA)

**13**TH FCI-ASIA, AFRICA & OCEANIA  
CHAMPIONSHIP SHOW (SATURDAY)  
JUDGE: MR. DONG PING (CHINA)

**254**TH SKC  
CHAMPIONSHIP DOG SHOW (SUNDAY)  
JUDGE: MR. WIPAS THAWEEKITIKUL  
(THAILAND)

**45**TH FCI  
INTERNATIONAL CACIB SHOW (SUNDAY)  
JUDGE: MR. NAWIN SANGVIVAKE  
(THAILAND)

SPONSORS:



# NUTRIPE®

INSPIRED BY NATURE, FORTIFIED BY SCIENCE

## RAW

# Freeze-Dried Food & Treats (Toppers)



SCIENTIST  
FORMULATED

# NUTRIPE®

INSPIRED BY NATURE, FORTIFIED BY SCIENCE

## ESSENCE Grain-free Dry Food

+ Enzymes | Prebiotics | Probiotics  
Complete & Balanced



Gut Function



Joint Health



Derma Health



Immune System  
Booster



Urinary Tract  
Health



Hairball Control



SCIENTIST  
FORMULATED



# Taste of the Wild<sup>®</sup>

MADE IN USA

**The balanced diet  
that nature intended<sup>®</sup>  
[tasteofthewildpetfood.com](http://tasteofthewildpetfood.com)**

## **MR. DONG PING**

**(CHINA)**



Mr. Dong Ping (China)

CKU Dog Handler Inspector

CKU All-breed Inspector

Principal of Beijing Dong Ping Dog Handler Training School

Mr. Dong Ping has developed a strong interest in dog shows since he watched them for the first time in 2003. He later became active in the four major dog beauty pageants in China, gradually began his career as a handler, and at the same time devoted himself to dog training, traction, management, and research.

With his high sensitivity to competitions, deep understanding of dogs and rich traction experience, he has repeatedly achieved brilliant results. Since 2006, the dogs led by Mr. Dong Ping have won more than 100 championships.

In 2008, he went to Japan to compete and achieved excellent results; in 2009-2010, the dogs he led and managed were second to none and won the first place in the CKU All-breed Points List; in 2012, he obtained the CKU A-level Dog Handler Qualification Certificate.

He was a member of the Chinese team and went to the Eukanuba World Championship in the United States. Since CKU held its first referee training event in 2012, he has devoted himself to studying professional knowledge such as referee evaluation and referee psychology to cooperate with future higher-quality competitions and teaching work.

In July 2014, he successfully passed the CKU teacher-level dog handler exam and became the CKU chief teacher-level dog handler. In 2016, he became a dog handler examiner. With rich teaching and competition experience, as well as CKU's excellent results in the referee exam, he obtained the CKU full-breed review qualification in 2017. He has also refereed all-breed competitions in Mongolia, Japan, the Philippines, Malaysia, Singapore, Indonesia, Thailand, Initiative, Germany, Australia and other places.

Mr. Dong Ping also has a high understanding of Chinese-bred dogs, and has served as an examiner in the first Sichuan East Hound Chongqing Dog Solo Show in 2017.

## MR. FAN BU

(CHINA)



CKU Judge Committee member

CKU all breed judge

Mr. Fan Bu founded Border Avenue Kennel in end of 2007. In beginning of 2008, he was invited to participate in FCI Japan International Dog Show. Between 2010 and 2013, at International friends' request, he travelled around Japan and Australia to visit the famous Kennels and communicate with famous judges. In 2015, he participated in Canadian dog shows, brought his dog onto BIS stage, won the first place of BIS and got CA Champion in One station. That's the first time a Chinese man with his Border collie could win such A big reward in Canada.

2021 CKU the third in all breeds and first in the sheep dog group.

2023 CKU the first in all breeds.

Mr. Fan Bu is both a devoted breeder and a professional handler. He concentrates on breeding Border Collie for quality, and meanwhile with his skillful training and handling, his dogs shine on the stage and won tens of BIS and champions. He likes to exchange knowledges with foreign friends and participated in over-sea dog shows, so he could stay with the top level in the world, and deepen his understanding and percipient to different breeds. He also put a lot time and heart into study canine nutrition and psychology for dog's welfare

Mr. Bu loves dogs. With enthusiasm, compassion and professionalism, all he has been devoted attribute to his glory.

In October 2015, He became a CKU dog show judge, and in November he became CKU judge committee member. In 2018, he became all breed judge.

Mr. Bu's judging experience includes: ChinaAustralia, Philippines, Mongolia,Russia.

2021 CKU National Show BIS judge, 2021 CKU Guo Show (國秀) Border Collie special show judge.

## **MR. NAWIN SANGVIVAKE**

**(THAILAND)**



Mr. Nawin had his first dogs back in 2001, by owning Pomeranian and Chihuahua. He has always been passionate about Chihuahua and concentrated in studying this breed intensively.

Mr. Nawin commenced his first showing in 2005 and continuously participated in the show both across country and Internationally. He is the owner of WINCHI'S KENNEL, a registered owner and breeder for Chihuahua.

His dogs finished championships from many countries, such as UK, Canada, Lithuanian, Italy, Finland, France, Malaysia, India, and China and etc.

Currently, Mr. Nawin is expanding his interests to other breeds, such as American Cocker Spaniel, Pomeranian, French Bull dog, and Thai ridgeback. which he will need to gain valuable experience as much as he can.

Last but not least, Mr. Nawin will utilize all of his knowledge and ability to fairly and honestly judge all the dogs.

## MR. WIPAS THAWEEKITIKUL

(THAILAND)



Mr. Wipas Thaweekitikul is the Committee and Registrar of The Kennel Association of Thailand (KATH) and the Chairman of Creative Thai Dog Club (CTC), Owner of J.D. Kennel. His family and relatives involve in medical and veterinary medicine profession. He has been working in textile industry over 40 years currently is an executive adviser.

Mr. Wipas is a dog lover since childhood and gain experiences from variety of the breeds such as Golden Retriever, Labrador Retriever, German Shepherd, Siberian Husky, Poodle, Miniature Schnauzer, Pembroke Welsh Corgi, Beagle, Thai Ridgeback and Thai Bangkaew etc.

His passion purebred is Thai Ridgeback Dog and he dedicated lifetime continuous improve the TRD since 1995 and succeeded the breed on the show for more 25 years. There are many champions under "JD" prefix that highly successful got Best In Show in the local and international dog show which breeding, training and handle by himself.

Mr. Wipas is currently FCI All Breed Judge and KATH's judge committee and trainer. He has experience of judging dog show throughout the present for more 20 years in many countries such as Thailand, Russia, Philippines, Vietnam, Japan, India, Malaysia, Indonesia, Taiwan, China, Myanmar, Mongolia etc.





**Judging Sequence** \*please note that timing is an estimate. Exhibitors are advised to keep an eye on the show ring.

**253<sup>rd</sup> SKC Championship Dog Show  
(Saturday, 22<sup>nd</sup> February 2025)**

Group 9 – 11.30am  
Group 8 – 1.05pm  
Group 10 – 1.45pm  
Group 7 – 2.00pm  
Group 2 – 2.05pm  
Junior Handling – 2.45pm  
Break – 3.05pm  
Minor Puppy – 3.50pm  
Group 3 – 4.20pm  
Group 5 – 4.45pm  
Group 4 – 5.40pm  
Group 1 – 5.45pm  
Break – 7.15pm  
General Specials – 8.00pm

**13<sup>th</sup> FCI-A2OCS  
(Saturday, 22<sup>nd</sup> February 2025)**

Group 7 – 11.30am  
Group 2 – 11.35am  
Group 5 – 12.15pm  
Group 4 – 1.10pm  
Group 1 – 1.15pm  
Minor Puppy – 2.45pm  
Break – 3.15pm  
Junior Handling – 4.00pm  
Group 9 – 4.20pm  
Group 8 – 5.55pm  
Group 10 – 6.35pm  
Group 3 – 6.50pm  
Break – 7.15pm  
General Specials – 7.30pm

**254<sup>th</sup> SKC Championship Dog Show  
(Sunday, 23<sup>rd</sup> February 2025)**

Group 9 – 11.30am  
Group 8 – 1.05pm  
Group 10 – 1.45pm  
Group 7 – 2.00pm  
Group 2 – 2.05pm  
Junior Handling – 2.45pm  
Break – 3.05pm  
Minor Puppy – 3.50pm  
Group 3 – 4.20pm  
Group 5 – 4.45pm  
Group 4 – 5.40pm  
Group 1 – 5.45pm  
Break – 7.15pm  
General Specials – 8.00pm

**45<sup>th</sup> FCI International CACIB Show  
(Sunday, 23<sup>rd</sup> February 2025)**

Group 7 – 11.30am  
Group 2 – 11.35am  
Group 5 – 12.15pm  
Group 4 – 1.10pm  
Group 1 – 1.15pm  
Minor Puppy – 2.45pm  
Break – 3.15pm  
Junior Handling – 4.00pm  
Group 9 – 4.20pm  
Group 8 – 5.55pm  
Group 10 – 6.35pm  
Group 3 – 6.50pm  
Break – 7.15pm  
General Specials – 7.30pm

## **ACKNOWLEDGEMENTS**

THE SINGAPORE KENNEL CLUB WOULD LIKE TO EXPRESS  
ITS GRATITUDE TO THE FOLLOWING:

**MACPHERSON COMMUNITY CLUB** – For providing the venue to the 253<sup>rd</sup> SKC Championship Dog Show, 13<sup>th</sup> FCI Asia, Africa & Oceania Championship Show, 254<sup>th</sup> SKC Championship Dog Show and 45<sup>th</sup> FCI International CACIB Show. Special thanks to Mr. Monish and his team for all the support, assistance and understanding throughout the planning and execution stages.

**NUTRIPE & TASTE OF WILD** – For their gracious support and being the sponsor of the 253<sup>rd</sup> SKC Championship Dog Show, 13<sup>th</sup> FCI Asia, Africa & Oceania Championship Show, 254<sup>th</sup> SKC Championship Dog Show and 45<sup>th</sup> FCI International CACIB Show.

**LINK 2 LINK ASIA PACIFIC PTE LTD** – For their gracious support and being the sponsor of the 253<sup>rd</sup> SKC Championship Dog Show, 13<sup>th</sup> FCI Asia, Africa & Oceania Championship Show, 254<sup>th</sup> SKC Championship Dog Show and 45<sup>th</sup> FCI International CACIB Show.

**MR. JERRY KOH** - For his gracious support and sponsor for the Junior Handler Competition rosettes.

**ALL MEMBERS** – For cooperating and adhering to the benching arrangements and participating in the Shows and making them meaningful.

AND ALL THOSE WHO HELPED IN ONE WAY OR ANOTHER AND WHOSE NAMES HAVE INADVERTENTLY  
BEEN OMITTED.

## CHAMPIONSHIP DOG SHOWS

At our Dog Shows, there may be a number of competitions going on at the same time – Conformation Dog Shows, Obedience Trials, Agility Trials, etc. The key Shows for the Singapore Kennel Club are the SKC Championship Conformation Shows. In addition, to enable our dogs to be internationally recognised in quality, Federation Cynologique Internationale (FCI) and Asia Pacific Championship Shows (APAC) are often held in conjunction with our SKC Championship Shows.

A Conformation Dog Show is like a beauty contest. Every breed has a written standard based on its country of origin, describing in detail what a perfect specimen of the breed should look like, from head to toe, the size, the colours of the coat, how it should move and how it should behave. All Conformation Dog Shows under the SKC use the same breed standards and the same Group classifications. In addition, an exhibit also needs to be handled well in order to show off its virtues to its best advantage.

The Judge compares the exhibit that is being judged with the Breed Standard according to his interpretation. As Breed Standards are not of mathematical precision and Judges' experiences are not identical, the Judges' interpretation of the Breed Standard may vary with different Judges placing more importance in different aspects of the Breed Standard. Hence, results for the exhibit may vary from Show to Show. However, real quality always reaches the top and to be a Champion, a dog must have won their qualifying awards under different Judges at different Shows.

There are different qualifying requirements for Championship status awarded by each organisation (SKC, APAC and the FCI).

For each breed, prizes will be awarded as follows: -

1 dog in a Class	: 1 <sup>st</sup> prize
Less than 5 exhibits in a Class	: 1 <sup>st</sup> and 2 <sup>nd</sup> prizes
5 or more exhibits in a Class	: 1 <sup>st</sup> , 2 <sup>nd</sup> and 3 <sup>rd</sup> prizes

There are also Best of Breed (BOB), Best of Winners (BOW) and Best Opposite Sex (BOS) as applicable for the Shows.

**BEST OF BREED** – The dog judged as the best in its breed category

**BEST OF WINNERS** – The dog judged as best between Winners Dog and Winners Bitch

**BEST OPPOSITE SEX** – The best dog that is the opposite sex of the best of breed winner

However, should the Judge consider that the exhibit to be not up to the standard, he may withhold the prize or award a Second Prize instead of the First Prize. Similarly, the Judge may withhold the FCI CACIB, APCS CAC or the SKC Challenge Certificates if he thinks fit.

From Breed level, exhibits which are successful will proceed to compete at the next level, i.e. the Group level. Winners at Group level will then proceed to the highest level, i.e. Best In Show and Show Specials.

## NOTICE TO EXHIBITORS AND OTHERS

### **DO'S**

Do collect your Prize Cards and Challenge Certificates.

Do help to keep the place (inside and outside) as clean when you leave as when you arrived.

Do please check that your Entries are correct in the Show Programme. If there are irregularities, please report ASAP to the show secretary.

Do remember that all exhibits must at all times be controlled on a leash, including in the Show Ring

Do remember the S.K.C. Ruling that every dog in the Ring must be handled by a separate individual i.e. no person may handle more than one dog in the Ring at the same time. Exhibits will not be allowed in the judging Ring at any time except when required for showing.

Do put your mobile phone to silent mode as loud ringtones can be distracting.

Do take note of the Notices put up by SKC at the show venue. They should be followed.

Do always muzzle Category B dogs, except when entering the Ring.

Do note that certain show venues disallow alcoholic beverages i.e. all community centres. For such venues, please be sure to respect the venue's rules.

### **DON'TS**

Don't expect to win a "Best In Show" the first time you exhibit.

Don't overlook the fact that all exhibitors cannot be winners.

Don't fail to compare carefully your exhibit with the winners. It may be the means of your seeing where your dog fails.

Don't be a bad sport and grouse at the Judge. You entered to get the judge's opinion, so let it rest at that.

Don't forget a great essential to showing is proper training. An exhibit that has not been trained has no chance in strange company and will sadly disappoint you with its deportment in the Ring if you failed in this aspect.

Don't leave your dog unattended. The S.K.C. and the Show organizers will not be held responsible if any dog strays or is found to be missing from the Show premises.

Don't forget that the Committee earnestly seeks your active co-operation to ensure a successful Show and asks that you do your part to carry out all regulations.

Don't pat or touch a strange dog. It may bite you.

Don't use flash when taking photos. It may distract dogs and handlers.

Do not move or remove barricades, flower pots or equipment from their original positions. They are there for a reason.

### **Note:-**

- **Do note that certain show venues disallow alcoholic beverages i.e. all community centres. For such venues, please be sure to respect the venue's rules.**
- **Collecting steward reserves the right to scratch exhibit(s) after three calling. All exhibitors are advised to keep an eye on the show ring.**
- **Exhibitors are advised to refrain from bringing dogs to the CC's mini garden to pee and poo and no smoking within the premises.**

### **Handling In The Ring**

It should be specially noted that children under the age of 12 will not be allowed to handle except in the Junior Handling Class, unless they can satisfy the Stewards that they are capable of exhibiting the dog correctly.

## QUALIFICATION FOR SINGAPORE KENNEL CLUB (SKC) CHAMPION STATUS

1. This Championship status is awarded by the Singapore Kennel Club.
2. SKC Challenge Certificates (CCs) are only awarded at Championship Conformation Shows organized by (or under license from) SKC. Only 1 CC is awarded for each sex in each breed, subject to the Judge considering the exhibit to be of sufficient merit worthy of the title of Champion.
3. CCs will be competed for by exhibits which are not SKC Champions on the day of the Show and beaten winners of each class for each sex.
4. A minimum of 3 CCs under 3 different Judges at 3 different Shows (with a total of 60 points) are required by each dog to qualify for the title of SKC Champion.
5. The number of points attached to each CC obtained at each Show is solely dependent on the number of actual exhibits beaten in each breed (in each gender) present at the specific show as follows:
  - Single exhibit = 5 point
  - 1 to 2 dogs/bitches beaten = 10 points
  - 3 dogs/bitches beaten = 15 points
  - 4 and above dogs/bitches beaten = 20 points

The maximum number of points for any CC at any one Championship Show is 20 points irrespective of level of achievement stated in point 6 below.

- 5.1 The number of actual exhibits used in the points calculation is determined by the highest level of achievement by the exhibit for each breed at the Show as follows:
  - 5.1a CC dog or bitch – Number of dogs or bitches beaten for CC competition in each gender, excluding SKC Champions in Champion Class
  - 5.1b Best of Winners (BOW) – where the CC dog or bitch wins BOW, number of all the breed exhibits beaten, both dogs and bitches except for SKC Champions in Champions Classes.
  - 5.1c Best of Breed (BOB) – where BOW wins BOB, i.e also beating the exhibits in the Champion Class, the actual number of exhibits in the Champion Class will be added. The maximum Championship points attainable remain at 20.
  - 5.1d When a non-Champion wins BOB or Reserve BOB (RBOB), it will not accumulate Grand Champion points.
  - 5.1e **For each breed, the BOB and RBOB will be eligible to compete for Best In Group. However, the RBOB will not be eligible to compete for Best In Show.**
6. Upon the Governing Council's (GC) confirmation, the SKC Champion title shall be awarded when a dog or bitch has accumulated 60 points under the above Rule.

## QUALIFICATION FOR SINGAPORE KENNEL CLUB (SKC) GRAND & SUPREME CHAMPION STATUS

### GRAND CHAMPION

The title of Singapore Grand Champion can be attained by dogs who accumulate 500 Grand Points (GP), after receiving its Singapore Champion title.

- a. Grand Points will only be awarded to RBOBs, BOBs, RBIGs, BIGs, RBIGs, BIS, BIS2 and BIS3, according to the number of exhibits beaten at the dog/bitch's highest level of achievement.
- b. Each beaten exhibits equates to 1 GP.

### SUPREME CHAMPION

The title of Singapore Supreme Champion can be attained by dogs who accumulate 500 GP, after receiving its Grand Champion title.

- a. Points will only be awarded to RBOBs, BOBs, RBIGs, BIGs, RBIGs, BIS, BIS2 and BIS3, according to the number of exhibits beaten at the dog/bitch's highest level of achievement.
- b. Each beaten exhibits equates to 1 GP.

**\*Members are to keep their own record of GP and submit to SKC office for verification in order to apply for the Grand Champion / Supreme Champion title.**

*For exhibits that have shown in Year 2019, grand points (GP) will be awarded for their 2019 achievements according to the new rules, for accumulation towards the Grand Champion & Supreme Champion title.*

## DEFINITION OF CLASSES

Puppy Class: from 6 to not exceeding 9 calendar months

Junior Class: from 9 to not exceeding 15 calendar months

Intermediate Class: from 15 to not exceeding 24 calendar months

Open Class: 15 months and above

Veteran Class: from 8 years and above

Champion Class: All SKC Champions

## QUALIFICATION FOR FCI INTERNATIONAL CHAMPION STATUS

The only dogs/bitches which can be taken into consideration for the CACIB are those which have been awarded "EXCELLENT 1<sup>st</sup>." A CACIB can only be awarded if a said dog/bitch has been assessed as being of superior quality. The CACIB is not automatically and compulsorily linked to the "EXCELLENT 1<sup>st</sup>."

**The Reserve CACIB is awarded to the second best dog which was given the qualification "EXCELLENT". It is however not compulsory to award the Reserve CACIB. The judge awards the CACIB and RESERVE CACIB according to the quality of the dogs.**

Only one Judge for each sex and breed carries out the granting of all awards, including the CACIB and this Judge shall be appointed in advance.

The Dog/Bitch must have earned, under 3 different Judges, 4 CACIB's (Certificat d'Aptitude au Championnat International de Beauté) no matter the number of competing dogs.

Between the first and last CACIB, a minimum period of one year and one day must have elapsed. Members are required to print their dog's CACIB.

### How To Print Your Dog's CACIB from the FCI website:

1. Log into the FCI website: <http://www.fci.be/en/>
2. Click on **Results**. Please read the contents under: Results of the FCI International CACIB Dog Shows.
3. Take note of the following statement on the FCI website and print your CACIB.  
'You can then print the **CACIB (Certificat d'Aptitude au Championnat International)** gained by your dog from the list of results (click on the icon). The CACIB certificates are no longer sent by post by the FCI Office.'
4. The first icon is: Year of the Show – Select the Year by clicking on the arrow.  

5. Within a couple of seconds you will see: Country of the Show – Select "Singapore".  

6. Within another couple of seconds you will see: City of the Show – Click on the arrow and Singapore will pop-out. Click on "Singapore".
7. In the next few seconds the Date of the Show/s, will pop out. Select the Date.
8. Finally, is the FCI Group, to which your dog belongs to.  
If it is from Group 9, click it and scroll right down to find your dog's Breed.  
All details are included.  
In the last column, in red is the PDF icon. Open it. It is your dog's **CACIB**.

## DEFINITION OF CLASSES

### Classes in which the CACIB cannot be awarded.

- Puppy Class (from 6 to 9 months)
- Junior Class (from 9 to 15 months)
- Veteran Class (from 8 years and above)

### Classes in which the CACIB can be awarded

- Intermediate class (from 15 to 24 months)
  - Open Class (15 months and over)
  - Working Class (15 months and over)
- Champion\* Class (15 months and over)
  - \*all countries including Singapore

## QUALIFICATION FOR ASIA PACIFIC CHAMPIONSHIP TITLE

1.To obtain the title of Asia Pacific Champion: A dog/bitch who is already a Champion of an FCI member country, must win FOUR APCS CAC dog/bitch with a rating of EXCELLENT at any APCS anywhere within the FCI Asia-Pacific Section. A dog/bitch may obtain the APCS CACs in the same country to attain this title, since some countries have problems with quarantine.

2.To obtain the title of Asia Pacific Grand Champion: A dog/bitch who is already a Champion of an FCI member country, must win EIGHT APCS CAC dog/bitch with a rating of EXCELLENT at any APCS anywhere within the FCI Asia-Pacific Section. At least TWO of the Eight APCS CAC MUST be won in two different FCI Asia-Pacific Section countries for the dog to qualify for this title.

3.To obtain the title of Asia Pacific Supreme Champion: A dog/bitch who is already a Champion of an FCI member country, must win TWELVE APCS CAC dog/bitch with a rating of EXCELLENT at any APCS anywhere within the FCI Asia-Pacific Section PLUS win a BIS1 (Best in Show 1) at an APCS. At least THREE of the Twelve APCS CAC MUST be won in three different FCI Asia-Pacific Section countries for the dog to qualify for this title.



LIST OF BREEDS RECOGNIZED BY  
FEDERATION CYNOLOGIQUE INTERNATIONALE  
(THE COMPREHENSIVE LIST IS AVAILABLE AT [www.fci.be](http://www.fci.be))

<b>Group 1: Sheepdogs and Cattle Dogs (except Swiss Cattle Dogs)</b>	
<b>Breeds</b>	
1	Australian Cattle Dog (Australia)
2	Australian Kelpie (Australia)
3	Australian Shepherd (USA)
4	Miniature American Shepherd (USA)
4	Bearded Collie (Great Britain)
5	Beauceron (France)
6	Belgian Shepherd Dog (Belgium)
7	Border Collie (Great Britain)
8	Bouvier Des Flandres (Belgium/ France)
9	Briard (France)
10	Collie – Rough (Great Britain)
11	Collie – Smooth (Great Britain)
12	German Shepherd Dog (Germany)
13	Hungarian Kuvasz (Hungary)
14	Komondor (Hungary)
15	Maremma Sheepdog (Italy)
16	Old English Sheepdog (Great Britain)
17	Polish Lowland Sheepdog (Poland)
18	Puli (Hungary)
19	Pyrenean Sheepdog (France)
20	Schipperke (Belgium)
21	Shetland Sheepdog (Great Britain)
22	Welsh Corgi (Cardigan) (Great Britain)
23	Welsh Corgi (Pembroke) (Great Britain)
24	White Swiss Shepherd Dog (Switzerland)

<b>Group 2: Pinscher and Schnauzer, Molossoid and Swiss Mountain Dog</b>	
<b>Breeds</b>	
1	Affenpinscher (Germany)
2	Bernese Mountain Dog (Switzerland)
3	Boxer (Germany)
4	Bulldog (Great Britain)
5	Bullmastiff (Great Britain)
6	Dobermann (Germany)
7	Dogue De Bordeaux (France)
8	English Mastiff (Great Britain)
9	German Pinscher (Germany)
10	Great Dane (Germany)
11	Great Swiss Mountain Dog (Switzerland)
12	Leonberger (Germany)
13	Miniature Pinscher (Germany)
14	Neapolitan Mastiff (Italy)
15	Newfoundland (Canada)
16	Pinscher (Germany)
17	Pyrenean Mountain Dog (France)
18	Rottweiler (Germany)
19	Russian Black Terrier (Russia)
20	Schnauzer (Germany)
21	Schnauzer –Giant (Germany)
22	Schnauzer – Miniature (Germany)
23	Shar Pei (China)
24	St. Bernard (Switzerland)

<b>Group 3: Terriers</b>	
<b>Breeds</b>	
1	Australian Terrier (Australia)
2	Australian Silky Terrier (Australia)
3	Airedale Terrier (Great Britain)
4	Bedlington Terrier (Great Britain)
5	Border Terrier (Great Britain)
6	Bull Terrier (Great Britain)
7	Bull Terrier – Miniature (Great Britain)
8	Cairn Terrier (Great Britain)
9	Dandie Dinmont Terrier (Great Britain)
10	English Toy Terrier – Black & Tan (Great Britain)
11	Fox Terrier – Smooth (Great Britain)
12	Fox Terrier – Wire (Great Britain)
13	Irish Terrier (Ireland)
14	Jack Russell Terrier (Great Britain)
15	Parson Russell Terrier (Great Britain)
16	Kerry Blue Terrier (Ireland)
17	Lakeland Terrier (Great Britain)
18	Manchester Terrier (Great Britain)
19	Norfolk Terrier (Great Britain)
20	Norwich Terrier (Great Britain)
21	Scottish Terrier (Great Britain)
22	Sealyham Terrier (Great Britain)
23	Skye Terrier (Great Britain)
24	Soft Coated Wheaten Terrier (Ireland)
25	Welsh Terrier (Great Britain)
26	West Highland White Terrier (Great Britain)
27	Yorkshire Terrier (Great Britain)

<b>Group 4: Dachshunds</b>	
<b>Breeds</b>	
1	Dachshund – Standard Long-Haired (Germany)
2	Dachshund – Standard Smooth-Haired (Germany)
3	Dachshund – Standard Wire-Haired (Germany)
4	Dachshund – Miniature Long-Haired (Germany)
5	Dachshund – Miniature Smooth-Haired (Germany)
6	Dachshund – Miniature Wire-Haired (Germany)
7	Dachshund – Rabbit Long-Haired (Germany)
8	Dachshund – Rabbit Smooth-Haired (Germany)
9	Dachshund – Rabbit Wire-Haired (Germany)

<b>Group 5: Spitz and Primitive Types</b>	
<b>Breeds</b>	
1	Alaskan Malamute (USA)
2	Basenji (Central Africa)
3	Chow Chow (China)
4	Finnish Spitz (Finland)
5	Ibizan Hound (Ibiza)
6	Italian Volpino (Italy)
7	Norwegian Elkhound (Norway)
8	Japanese Shiba Inu (Japan)
9	Japanese Spitz (Japan)
10	Pharaoh Hound (Malta)
11	Pomeranian (Germany)
12	Samoyed (Russia)
13	Siberian Husky (USA)
14	Taiwan Dog (Taiwan)
15	Thai Ridgeback (Thailand)
16	Xoloitzcuintle (Mexico)

<b>Group 6: Scenthounds and related breeds</b>	
<b>Breeds</b>	
1	American Foxhound (USA)
2	Beagle (Great Britain)
3	Bloodhound (Belgium)
4	Basset Fauve de Bretagne (France)
5	Basset Hound (Great Britain)
6	Dalmatian (Croatia)
7	English Foxhound (Great Britain)
8	Grand Basset Griffon Vendéen (France)
9	Griffon Fauve de Bretagne (France)
10	Petit Basset Griffon Vendéen (France)
11	Otterhound (Great Britain)
12	Rhodesian Ridgeback (Zimbabwe)

<b>Group 7: Pointers and Setters</b>	
<b>Breeds</b>	
1	Bracco Italiano (Italy)
2	Brittany (France)
3	Hungarian Vizsla (Hungary)
4	Hungarian Wire Haired Vizla (Hungary)
5	Italian Spinone (Italy)
6	Large Munsterlander (Germany)
7	Pointer – English (Great Britain)
8	Pointer – German Shorthaired (Germany)
9	Pointer – German Wirehaired (Germany)
10	Setter – English (Great Britain)
11	Setter – Gordon (Great Britain)
12	Setter – Irish (Ireland)
13	Setter – Irish Red and White (Ireland)
14	Weimaraner (Germany)

<b>Group 8: Retrievers – Flush Dogs – Water Dogs</b>	
<b>Breeds</b>	
1	Portuguese Water Dog (Portugal)
2	Retriever – Curly Coated (Great Britain)
3	Retriever – Flat Coated (Great Britain)
4	Retriever – Golden (Great Britain)
5	Retriever – Labrador (Great Britain)
6	Spaniel – American Cocker (USA)
7	Spaniel – Clumber (Great Britain)
8	Spaniel – Cocker (Great Britain)
9	Spaniel – English Springer (Great Britain)
10	Spaniel – Sussex (Great Britain)

<b>Group 9: Companion and Toy Dogs</b>	
<b>Breeds</b>	
1	Bichon Frise (Belgium/ France)
2	Bolognese (Italy)
3	Boston Terrier (USA)
4	Cavalier King Charles Spaniel (Great Britain)
5	Coton De Tulear (Madagascar)
6	French Bulldog (Great Britain)
7	Chihuahua – Long Coat (Mexico)
8	Chihuahua – Smooth Coat (Mexico)
9	Chinese Crested Dog – Hairless (China)
10	Chinese Crested Dog – Powderpuff (China)
11	Continental Toy Spaniel – Papillon (France)
12	Continental Toy Spaniel – Phalène (France)
13	Griffon Bruxellois (Belgium)
14	Havanese (Western Mediterranean)
15	Japanese Chin (Japan)
16	King Charles Spaniel (Great Britain)
17	Lhasa Apso (Tibet/ China)
18	Lowchen (France)
19	Maltese (Central Mediterranean)
20	Pekingese (China)
21	Pug (China)
22	Shih Tzu (Tibet/ China)
23	Tibetan Spaniel (Tibet/ China)
24	Tibetan Terrier (Tibet/ China)
25	Poodle – Standard (France)
26	Poodle – Medium (France)
27	Poodle – Miniature (France)
28	Poodle – Toy (France)

<b>Group 10: Sight Hounds</b>	
<b>Breeds</b>	
1	Afghan Hound (Afghanistan)
2	Azawakh (Mali)
3	Borzoi (Russia)
4	Deerhound (Great Britain)
5	Greyhound (Great Britain)
6	Irish Wolfhound (Ireland)
7	Italian Greyhound (Italy)
8	Saluki (Middle East)
9	Whippet (Great Britain)

**Breed Winners Annual Award**  
(Effective from the 1st. Show of 2020)

Rules for the BOY as follows: -

- . The Awards shall be offered for competition by the Singapore Kennel Club and shall be won by the exhibits securing the greatest number of points at FCI, SKC and Asia, Africa & Oceania Championship Shows, over a period of one year, corresponding with the financial year of the Singapore Kennel Club.
- . There will be no points awarded in the breed categories, unless the dog/bitch of the breed has competed in at least 2 championship shows during the year and beaten at least one dog/bitch of the same breed in both occasions
- . In the event of a tie there will be a count-back based on the number of Best Of Breed awards won, followed by the number of dogs beaten at the relevant shows where the Best of Breed awards are won.
- . Affiliated Clubs' Dog Shows & SKC Specialty Shows will not count towards this award.
- . The Governing Council of the S.K.C. reserves the right in any year to alter, delete or add to these rules as it deems fit.
- . Points shall be computed as follows and the points applicable being additive.

<b>Awards</b>	<b>Points</b>
Best of Breed	= 15 points
Reserve Best of Breed	= 10 points

**Group Winners Annual Award**  
(Effective from the 1st. Show of 2020)

Rules for the GOY as follows:

- . The Awards shall be offered for competition by the Singapore Kennel Club and shall be won by the exhibits securing the greatest number of points at FCI, SKC and Asia, Africa & Oceania Championship Shows, over a period of one year, corresponding with the financial year of the Singapore Kennel Club
- . The dog must have won at least one (01) Best In Group in order to be eligible for the award.
- . In the event of a tie there will be a count-back based on the number of Best In Group awards won, followed by the number of dogs beaten at the relevant shows where the Best In Group awards are won.
- . Group points from all Shows (SKC, FCI, A2OCS) will be included in the computation.
- . Affiliated Clubs' Dog Shows & SKC Specialty Shows will not count towards this award.
- . The Governing Council of the S.K.C. reserves the right in any year to alter, delete or add to these rules as it deems fit.
- . Points shall be computed as follows and the points applicable being additive: -

<b>Awards</b>	<b>Points</b>
Best In Group	= 60 points
2nd Best In Group	= 30 points
3rd Best In Group	= 20 points

**Dog Of The Year Annual Award**  
**(Effective from the 1st. Show of 2020)**

Rules for the DOY as follows:

- . The Awards shall be offered for competition by the Singapore Kennel Club and shall be won by the exhibits securing the greatest number of points at FCI, SKC and Asia, Africa & Oceania Championship Shows, over a period of one year, corresponding with the financial year of the Singapore Kennel Club
- . The dog must have won at least one (01) Best In Show in order to be eligible for the award.
- . In the event of a tie there will be a count-back based on the number of Best In Show awards won, followed by the number of dogs beaten at the relevant shows where the Best In Show awards are won.
- . In Show points from all Shows (SKC, FCI, A2OCS) will be included in the computation
- . Affiliated Clubs' Dog Shows & SKC Specialty Shows will not count towards this award.
- . The Governing Council of the S.K.C. reserves the right in any year to alter, delete or add to these rules as it deems fit.
- . Points shall be computed as follows and the points applicable being additive:

<b>Awards</b>	<b>Points</b>
Best In Show	= 100 points
2nd Best In Show	= 50 points
3rd Best In Show	= 25 points

## SHOW ENTRIES

The following is the key to the information contained in the details of each entry:

DOG'S NAME; SEX; SIRE'S NAME; DAM'S NAME; SINGAPORE WHELPED (SW) OR IMPORTED (IMP); DATE OF WHELPING; NAME OF BREEDER.

'NAF' after a dog's name indicates that its NAME has been applied for application for registration has been duly received by the SKC.

'TAF' after a dog's name indicates that a TRANSFER has been applied for to register the dog in the exhibitor's name.

~~~~~

253<sup>RD</sup> SKC CHAMPIONSHIP DOG SHOW  
13<sup>TH</sup> FCI-ASIA, AFRICA & OCEANIA CHAMPIONSHIP SHOW

254<sup>TH</sup> SKC CHAMPIONSHIP DOG SHOW  
45<sup>TH</sup> FCI INTERNATIONAL CACIB DOG SHOW

## GROUP 1

| <b><u>AUSTRALIAN SHEPHERD DOG</u></b>                                        |                                                                                                                                                                                                                             | 254 <sup>TH</sup> SKC | 45 <sup>TH</sup> FCI           |
|------------------------------------------------------------------------------|-----------------------------------------------------------------------------------------------------------------------------------------------------------------------------------------------------------------------------|-----------------------|--------------------------------|
| PUPPY DOG                                                                    |                                                                                                                                                                                                                             |                       |                                |
| 1                                                                            | LIM YONG GUAN<br><b>DAZUMOON BREZZA DI POSITANO</b><br>DAZUMOON RIGHTS ALL RESERVED - DAZUMOON UNIQUE SHADES<br>IMP POR. 09.06.2024. CHAVES, ANA RITA MARTINHO                                                              | RCC DOG               | RCC DOG                        |
| OPEN DOG                                                                     |                                                                                                                                                                                                                             |                       |                                |
| 2                                                                            | DARREN YEW ZAI EN<br><b>D'AZUMOON KIGER MUSTANG</b><br>D'AZUMOON CATCH ME IF YOU CAN - D'AZUMOON LA VIE EN ROSE<br>IMP POR. 28.10.2022. CHAVES, ANA RITA MARTINHO                                                           | CC DOG, BOW           | CC DOG, BOB,<br>BOW, CACIB DOG |
| CHAMPION DOG (CHAMPION INTERMEDIATE IN SKC SHOWS)                            |                                                                                                                                                                                                                             |                       |                                |
| 3                                                                            | TENG WEI MING<br><b>SG.CH.D'AZUMOON STORM IS COMING</b><br>MICKEY FINN OF HICKORY LAKE - D'AZUMOON JUST MY DREAM<br>IMP POR. 12.04.2023. CHAVES, ANA RITA MARTINHO                                                          | RBOB                  |                                |
| CHAMPION DOG (CHAMPION INTERMEDIATE IN SKC SHOWS)                            |                                                                                                                                                                                                                             |                       |                                |
| 4                                                                            | DARREN YEW ZAI EN<br><b>SG.CH.D'AZUMOON SINGAPORE SLING</b><br>D'AZUMOON OBSESSED BY YOU - D'AZUMOON GIVE ME THE BEST DESTINY<br>IMP POR. 24.10.2022. CHAVES, ANA RITA MARTINHO                                             | BOB                   |                                |
| INTERMEDIATE BITCH (254 <sup>th</sup> SKC & 45 <sup>th</sup> FCI shows only) |                                                                                                                                                                                                                             |                       |                                |
| 5                                                                            | LEONG SAY HUI<br><b>CRYSTALBROOK ADOBE SHINING LIGHT IN SPRING</b><br>GCHB CH CAROLINA CALAIS BLOOD AND GOLD RA - CH NORTHBAY XSELL<br>SHOW AND TELL<br>IMP USA. 04.07.2023. CRYSTAL PHILBROOK/WENDY SUMMERS/ JOYCE SIDDALL | CC BITCH              | CC BITCH, RBOB,<br>CACIB BITCH |
| <b><u>BORDER COLLIE</u></b>                                                  |                                                                                                                                                                                                                             |                       |                                |
| OPEN BITCH (SG WHELPED IN SKC SHOWS)                                         |                                                                                                                                                                                                                             |                       |                                |
| 6                                                                            | JAZZMINE NG<br><b>ARISTOMILAGO BUGATTI CHIRON</b><br>MALTA BRADLEE OF ARISTOMILAGO - EIRI GREME FLOSS<br>SW. 07.12.2021 JAZZMINE NG                                                                                         | CC BITCH, BOB         | CC BITCH, BOB,<br>CACIB BITCH  |
| <b><u>GERMAN SHEPHERD DOG</u></b>                                            |                                                                                                                                                                                                                             |                       |                                |
| OPEN DOG                                                                     |                                                                                                                                                                                                                             |                       |                                |
| 7                                                                            | LEE BON SAI<br><b>KELINPARK U ARE MAVERICK</b><br>CHILI DELLA VALCUVIA - KEKLINPARK NUTELLA<br>IMP AUST. 04.12.2020. MRS L A GREGOR                                                                                         | - ABSENT -            | - ABSENT -                     |
| OPEN BITCH                                                                   |                                                                                                                                                                                                                             |                       |                                |
| 8                                                                            | NICHOL TAN LIAT HAW & ALEX CHUA<br><b>ODUSCHA VOM ELZMUNDUNGSRAUM</b><br>LEROY VOM PENDLER - MELODY DELLA VALCUVIA<br>IMP GER. 13.07.2021. MARTIN BRAUCH                                                                    | CC BITCH, BOB         | CC BITCH, BOB,<br>CACIB BITCH  |
| <b><u>MINIATURE AMERICAN SHEPHERD</u></b>                                    |                                                                                                                                                                                                                             |                       |                                |
| PUPPY DOG                                                                    |                                                                                                                                                                                                                             |                       |                                |
| 9                                                                            | LIANG SHUHUI LISABELLE<br><b>LJUVLIGA KORGEN FULL AV TAGGSVAMP</b><br>TRUE HAPPINESS SIR JACK - ASHLAND'S CHUPA CHUPS<br>IMP SWE. 10.08.2024. NATHALIE NYLEN                                                                | RCC DOG               | RCC DOG                        |

|                                                   |                                                                                   |                     |                                 |
|---------------------------------------------------|-----------------------------------------------------------------------------------|---------------------|---------------------------------|
| CHAMPION DOG (OPEN IN SKC SHOWS)                  |                                                                                   |                     |                                 |
| 10                                                | YAP SENG TECK                                                                     | CC DOG, BOB,<br>BOW | CC DOG, BOB,<br>BOW             |
|                                                   | <b>AL.KO.GRCH.CZEH.POLI.MAC.CH.FLYING M'S SOMETHING IN ORANGE</b>                 |                     |                                 |
|                                                   | GCHG CH DYNASTY'S TRIPLE CROWN - CH FLYING M'S DIRTY MARTINI                      |                     |                                 |
|                                                   | IMP USA. 04.06.2022. HEATHER MABREY                                               |                     |                                 |
| <b><u>SHETLAND SHEEPDOG</u></b>                   |                                                                                   |                     |                                 |
| JUNIOR DOG                                        |                                                                                   |                     |                                 |
| 11                                                | EILEEN SIM                                                                        | CC DOG, BOW         | RCC DOG,<br>JUNIOR CACIB<br>DOG |
|                                                   | <b>CLOUDSIDE DARK KNIGHT</b>                                                      |                     |                                 |
|                                                   | STARPHIRE LORD OF THE SEVEN KINGDOMS - CLOUDSIDE CATCHING FIRE                    |                     |                                 |
|                                                   | IMP CAN. 05.04.2022. STEVIE WEI                                                   |                     |                                 |
| CHAMPION DOG (CHAMPION INTERMEDIATE IN SKC SHOWS) |                                                                                   |                     |                                 |
| 12                                                | AMANDA LIM SI MIN                                                                 |                     |                                 |
|                                                   | <b>SG.CH.MAPLEHAVEN SILVERMYTH GRAND JUBILEE CELEBRATION</b>                      |                     |                                 |
|                                                   | SUNTIME SILVERMYTH EXQUISITE ONYX - KOR.CH.SILVERAY GOLDEN CELEBRATION MAPLEHAVEN |                     |                                 |
|                                                   | SW. 02.07.2023. AMANDA LIM SI MIN                                                 |                     |                                 |
| OPEN DOG (SG WHELPED IN SKC SHOWS)                |                                                                                   |                     |                                 |
| 13                                                | GILLIAN TEO CHOON PING                                                            |                     |                                 |
|                                                   | <b>ARISTOMILAGO INFINITY N BEYOND</b>                                             |                     |                                 |
|                                                   | LURIKEEN LIMITED EDITION - SG.CH.ARISTOMILAGO MY SASSY REBEL                      |                     |                                 |
|                                                   | SW. 12.12.2022. JAZZMINE NG                                                       |                     |                                 |
| OPEN DOG                                          |                                                                                   |                     |                                 |
| 14                                                | CHENG ELIM                                                                        | RCC DOG             |                                 |
|                                                   | <b>SHARNDAAH CLOUDFIRE</b>                                                        |                     |                                 |
|                                                   | SUP.CH.SHARNDAAH TH SWANKY YANK - LAUREATE CLOUDBERRY                             |                     |                                 |
|                                                   | IMP AUST. 05.01.2021. MRS TRACY WALTERS                                           |                     |                                 |
| CHAMPION DOG (CHAMPION OPEN IN SKC SHOWS)         |                                                                                   |                     |                                 |
| 15                                                | VERON ZHEN & HUBERT TAN                                                           |                     |                                 |
|                                                   | <b>SG.CH.HUBSVILLE SPARTAN III</b>                                                |                     |                                 |
|                                                   | SG.CH.SILVERAY DYNASTY - HUBSVILLE SPECIAL EDITION                                |                     |                                 |
|                                                   | SW. 16.05.2022. HUBERT TAN KAH IMM                                                |                     |                                 |
| CHAMPION DOG (CHAMPION OPEN IN SKC SHOWS)         |                                                                                   |                     |                                 |
| 16                                                | GILLIAN TEO CHOON PING                                                            |                     |                                 |
|                                                   | <b>SG.CH.IFONLY STEP IN TIME</b>                                                  |                     |                                 |
|                                                   | CH.ARAJENTO RAISE THE STAKES - CAN.CH.ZESTA SHAKE IT OFF                          |                     |                                 |
|                                                   | IMP AUST. 05.04.2022. MR J & MRS B SHEPHERDSON                                    |                     |                                 |
| CHAMPION DOG (CHAMPION OPEN IN SKC SHOWS)         |                                                                                   |                     |                                 |
| 17                                                | AMANDA LIM SI MIN                                                                 | BOB                 | BOB, CACIB DOG                  |
|                                                   | <b>KOR.CH.THAI.CH.SG.GRCH.SILVERAY DANDY BOY</b>                                  |                     |                                 |
|                                                   | AM.CH.BELMARK LE VIAN - SILVERAY ARE YOU READY                                    |                     |                                 |
|                                                   | IMP KOR. 02.08.2019. YEOM EUN-SUN                                                 |                     |                                 |
| CHAMPION DOG (CHAMPION OPEN IN SKC SHOWS)         |                                                                                   |                     |                                 |
| 18                                                | CHAU YAT WAH & HUTCH CHAU                                                         |                     |                                 |
|                                                   | <b>SG.CH.THAI.CH.MYTIME WINTERFELL'S ONCE IN A BLUE MOON</b>                      |                     |                                 |
|                                                   | GCH CH KISMET'S ENCORE AT DONLYN - CH MYTIME BLUE MAGNOLIA                        |                     |                                 |
|                                                   | IMP THAI. 29.06.2019. MICHELE A CRETON & JOHN CREATON                             |                     |                                 |
|                                                   |                                                                                   |                     |                                 |



|                                              |                                                                                                            |             |                                  |
|----------------------------------------------|------------------------------------------------------------------------------------------------------------|-------------|----------------------------------|
| VETERAN DOG (CHAMPION VETERAN IN SKC SHOWS)  |                                                                                                            |             |                                  |
| 19                                           | HUBERT TAN KAH IMM                                                                                         |             | VETERAN CACIB DOG                |
|                                              | <b>KOR.CH.SG.GRCH.JOY OF WITH PET HOUSE</b>                                                                |             |                                  |
|                                              | CH.AM.IONA WANTED - M-NANA OF WITH PET HOUSE                                                               |             |                                  |
|                                              | IMP KOR. 08.05.2016. YOON, DAI-JUNG                                                                        |             |                                  |
| JUNIOR BITCH (SG WHELPED IN SKC SHOWS)       |                                                                                                            |             |                                  |
| 20                                           | CHAU YAT WAH & HUTCH CHAU                                                                                  |             |                                  |
|                                              | <b>PAWFESSIONAL XXIV FAIRY</b>                                                                             |             |                                  |
|                                              | SG.CH.LUCKBAG'S YOU ARE MY ONLY LOVE – E'TIME ETA                                                          |             |                                  |
|                                              | SW. 27.04.2024. CHAU YAT WAH & HUTCH CHAU                                                                  |             |                                  |
| JUNIOR BITCH                                 |                                                                                                            |             |                                  |
| 21                                           | AMANDA LIM SI MIN                                                                                          |             | JUNIOR CACIB BITCH               |
|                                              | <b>MAPLEHAVEN SWEET OATH</b>                                                                               |             |                                  |
|                                              | AM.CAN.CH.LYNPHIL LAUREATE ADVANTAGE –                                                                     |             |                                  |
|                                              | SG.CH.KOR.CH.PHIL.CH.A2O.CH.INT.CH.SILVERAY SWEETHEART OF MAPLEHAVEN<br>SW. 04.04.2024. AMANDA LIM SI MIN  |             |                                  |
| OPEN DOG                                     |                                                                                                            |             |                                  |
| 22                                           | VERON ZHEN & HUBERT TAN                                                                                    |             | CC DOG                           |
|                                              | <b>HUBSVILLE ROCK MY HEART</b>                                                                             |             |                                  |
|                                              | KOR.CH.SG.CH.JOY OF WITH PET HOUSE – HUBSVILLE LIVING IN THE DREAM                                         |             |                                  |
|                                              | SW. 13.04.2020. HUBERT TAN KAH IMM                                                                         |             |                                  |
| INTERMEDIATE BITCH (SG WHELPED IN SKC SHOWS) |                                                                                                            |             |                                  |
| 23                                           | ANDREW SOETJAHJO MOELJOHARTONO@ANDREW YAP CHI EN                                                           | RCC BITCH   | RCC BITCH                        |
|                                              | <b>HUBSVILLE LORD'S GIFT</b>                                                                               |             |                                  |
|                                              | KOR.CH.SG.GRCH.JOY OF WITH PET HOUSE - SG.CH.SILVERAY LA LA LAND                                           |             |                                  |
|                                              | SW. 06.06.2023. HUBERT TAN KAH IMM                                                                         |             |                                  |
| OPEN BITCH                                   |                                                                                                            |             |                                  |
| 24                                           | CHENG ELIM                                                                                                 |             |                                  |
|                                              | <b>SHARNDAH UPTOWN GIRL</b>                                                                                |             |                                  |
|                                              | SUP.CH.SHELDON CHARLIE BROWN - PEERIELEE PHOTOSHOOT                                                        |             |                                  |
|                                              | IMP AUST. 15.04.2023. MRS TRACY WALTERS                                                                    |             |                                  |
| CHAMPION BITCH (OPEN IN SKC SHOWS)           |                                                                                                            |             |                                  |
| 25                                           | AMANDA LIM SI MIN                                                                                          | CC BITCH    | CC BITCH, BOW, RBOB, CACIB BITCH |
|                                              | <b>KOR.CH.SILVERAY GOLDEN CELEBRATION MAPLEHAVEN</b>                                                       |             |                                  |
|                                              | AM.GCH.KENSIL'S PROVEN INNOCENT - SG.CH.KOR.CH.SILVERAY AMAZING KISS                                       |             |                                  |
|                                              | IMP KOR. 20.04.2022. YEOM EUN-SUN                                                                          |             |                                  |
| CHAMPION BITCH (CHAMPION OPEN IN SKC SHOWS)  |                                                                                                            |             |                                  |
| 26                                           | AMANDA LIM SI MIN                                                                                          | RBOB        |                                  |
|                                              | <b>SG.CH.KOR.CH.PHIL.CH.A2O.CH.INT.CH.SILVERAY SWEETHEART OF MAPLEHAVEN</b>                                |             |                                  |
|                                              | CAN.CH.LYNPHIL ENCHANTE - KOR.CH.SILVERAY WHO ARE YOU                                                      |             |                                  |
|                                              | IMP KOR. 22.05.2020. YEOM EUN-SUN                                                                          |             |                                  |
| <b>WELSH CORGI (PEMBROKE)</b>                |                                                                                                            |             |                                  |
| JUNIOR DOG                                   |                                                                                                            |             |                                  |
| 27                                           | LIM SHU-YI                                                                                                 | CC DOG, BOW | CC DOG, JUNIOR CACIB DOG, BOW    |
|                                              | <b>DEVATTA DRC KIRBY</b>                                                                                   |             |                                  |
|                                              | SG.GRCH.CH(JP)CH/21.12.GCH(AM)CH(AM)RAINTREES HOPE AND GLORY - SG.CH.EMEISHANQUIN ROMANEE-CONTI AT DEVATTA |             |                                  |
|                                              | SW. 18.01.2024. DICK CHAN WAI KHUEN                                                                        |             |                                  |

|                                             |                                                                                                                                                      |          |                                 |
|---------------------------------------------|------------------------------------------------------------------------------------------------------------------------------------------------------|----------|---------------------------------|
| CHAMPION DOG (CHAMPION OPEN IN SKC SHOWS)   |                                                                                                                                                      | RBOB     | BOB, CACIB DOG                  |
| 28                                          | DICK CHAN WAI KHUEN                                                                                                                                  |          |                                 |
|                                             | <b>SG.GRCH.CH(JP)CH/21.12.GCH(AM)CH(AM) RAINTREES HOPE AND GLORY</b>                                                                                 |          |                                 |
|                                             | CH/20.3.GCH(AM)CH(AM)XIV KARAT GOOD NEWS TRAVEL FAST –<br>CH/16.9.RAINTREES JP SONG OF ICE AND FIRE<br>IMP JPN. 11.03.2020. ATSUMI KUNISHIO BIZENSHI |          |                                 |
| JUNIOR BITCH (SG WHELPED IN SKC SHOWS)      |                                                                                                                                                      | CC BITCH | CC BITCH, JUNIOR<br>CACIB BITCH |
| 29                                          | DICK CHAN WAI KHUEN                                                                                                                                  |          |                                 |
|                                             | <b>DEVATTA DRC BRITNEY</b>                                                                                                                           |          |                                 |
|                                             | SG.GRCH.CH(JP)CH/21.12.GCH(AM)CH(AM)RAINTREES HOPE AND GLORY -<br>SG.CH.EMEISHANQUIN ROMANEE-CONTI AT DEVATTA<br>SW. 18.01.2024. DICK CHAN WAI KHUEN |          |                                 |
| CHAMPION BITCH (CHAMPION OPEN IN SKC SHOWS) |                                                                                                                                                      | BOB      | RBOB, CACIB<br>BITCH            |
| 30                                          | DICK CHAN WAI KHUEN                                                                                                                                  |          |                                 |
|                                             | <b>SG.CH.KURZEBEINE MS AG BLACK SUIT WITH HG AT DEVATTA</b>                                                                                          |          |                                 |
|                                             | GCH.CH(AM)CITYSIDE SUPER BOWL WINNER - KURZEBEINE MS FCI AG CASH<br>WITH HG<br>IMP KOR. 05.03.2020. KIM, TAE-HWAN                                    |          |                                 |

## GROUP 1 SPECIALS

### 254<sup>TH</sup> SKC CHAMPIONSHIP DOG SHOW

| BREED                                       | BEST OF BREED | RES BEST OF BREED                                                                                       | PUPPY | JUNIOR | INTERMEDIATE | SG WHELPED | OPEN | VETERAN |
|---------------------------------------------|---------------|---------------------------------------------------------------------------------------------------------|-------|--------|--------------|------------|------|---------|
| AUSTRALIAN SHEPHERD DOG                     | 04            | 02                                                                                                      | 01    | -      | 05           | -          | 04   | -       |
| BORDER COLLIE                               | 06            | -                                                                                                       | -     | -      | -            | -          | 06   | -       |
| GERMAN SHEPHERD DOG                         | 08            | -                                                                                                       | -     | -      | -            | -          | 08   | -       |
| MINIATURE AMERICAN SHEPHERD DOG             | 10            | 09                                                                                                      | 09    | -      | -            | -          | 10   | -       |
| SHETLAND SHEEPDOG                           | 17            | 26                                                                                                      | -     | 11     | 12           | 23         | 17   | 19      |
| WELSH CORGI (PEMBROKE)                      | 30            | 28                                                                                                      | -     | 27     | -            | 29         | -    | -       |
|                                             |               |                                                                                                         |       |        |              |            |      |         |
| <b>BEST EXHIBIT IN GROUP</b>                | <b>04</b>     | -                                                                                                       | 01    | 11     | 12           | 29         | 04   | 19      |
| <b>2<sup>ND</sup> BEST EXHIBIT IN GROUP</b> | <b>30</b>     | <div style="border: 1px solid black; display: inline-block; padding: 5px 20px;">Judge's Signature</div> |       |        |              |            |      |         |
| <b>3<sup>RD</sup> BEST EXHIBIT IN GROUP</b> | <b>17</b>     |                                                                                                         |       |        |              |            |      |         |

## GROUP 1 SPECIALS

### 45<sup>TH</sup> FCI INTERNATIONAL CACIB SHOW

| BREED                                                                                                   | BEST OF BREED | RES BEST OF BREED | PUPPY | JUNIOR | INTERMEDIATE | OPEN | CHAMPION | VETERAN |  |
|---------------------------------------------------------------------------------------------------------|---------------|-------------------|-------|--------|--------------|------|----------|---------|--|
| AUSTRALIAN SHEPHERD DOG                                                                                 | 02            | 05                | 10    | -      | 05           | 02   | -        | -       |  |
| BORDER COLLIE                                                                                           | 06            | -                 | -     | -      | -            | 06   | -        | -       |  |
| GERMAN SHEPHERD DOG                                                                                     | 08            | -                 | -     | -      | -            | 08   | -        | -       |  |
| MINIATURE AMERICAN SHEPHERD DOG                                                                         | 10            | 09                | 09    | -      | -            | -    | 10       | -       |  |
| SHETLAND SHEEPDOG                                                                                       | 17            | 25                | -     | 11     | 23           | 22   | 17       | 19      |  |
| WELSH CORGI (PEMBROKE)                                                                                  | 28            | 30                | -     | 27     | -            | -    | 27       | --      |  |
|                                                                                                         |               |                   |       |        |              |      |          |         |  |
| BEST EXHIBIT IN GROUP                                                                                   | 17            | -                 | 01    | 27     | 23           | 02   | 17       | 19      |  |
| 2 <sup>ND</sup> BEST EXHIBIT IN GROUP                                                                   | 02            |                   |       |        |              |      |          |         |  |
| 3 <sup>RD</sup> BEST EXHIBIT IN GROUP                                                                   | 28            |                   |       |        |              |      |          |         |  |
| <div style="border: 1px solid black; display: inline-block; padding: 5px 20px;">Judge's Signature</div> |               |                   |       |        |              |      |          |         |  |

## GROUP 2

| <b><u>AFFENPINSCHER</u></b>                                                                    |                                                                      | 254 <sup>TH</sup> SKC | 45 <sup>TH</sup> FCI            |
|------------------------------------------------------------------------------------------------|----------------------------------------------------------------------|-----------------------|---------------------------------|
| PUPPY BITCH (254 <sup>th</sup> SKC & 45 <sup>th</sup> FCI shows only)                          |                                                                      |                       |                                 |
| 31                                                                                             | DR DHANASEKARAN THANAPAL                                             | RCC BITCH, RBOB       | RCC BITCH                       |
|                                                                                                | <b>BAYCLAN GAMORA V. TANI KAZARI</b>                                 |                       |                                 |
|                                                                                                | COO CO CA CHOO V. TANI KAZARI - BAYCLAN MAGNIFICENT MYSTIQUE         |                       |                                 |
|                                                                                                | SW. 30.07.2024. DR DHANASEKARAN THANAPAL                             |                       |                                 |
| OPEN BITCH (SG WHELPED IN SKC SHOWS) (254 <sup>th</sup> SKC & 45 <sup>th</sup> FCI shows only) |                                                                      |                       |                                 |
| 32                                                                                             | DR DHANASEKARAN THANAPAL                                             | CC BITCH, BOW, BOB    | CC BITCH, BOW, BOB, CACIB BITCH |
|                                                                                                | <b>BAYCLAN MIDNIGHT ENCHANTRESS</b>                                  |                       |                                 |
|                                                                                                | SG.CH. NICK NACK V.TANI KAZARI - BAYCLAN MAIDEN OF MISCHIEF          |                       |                                 |
|                                                                                                | SW. 10.12.2022. DR DHANASEKARAN THANAPAL                             |                       |                                 |
| <b><u>DOBERMANN</u></b>                                                                        |                                                                      |                       |                                 |
| OPEN BITCH                                                                                     |                                                                      |                       |                                 |
| 33                                                                                             | ANANTHA RAJ                                                          | CC BITCH, BOB         | CC BITCH, BOB, CACIB BITCH      |
|                                                                                                | <b>BEL NOME LANA</b>                                                 |                       |                                 |
|                                                                                                | BEL NOME BODIN - AZRA                                                |                       |                                 |
|                                                                                                | IMP PORT. 17.10.2020. UZELAC NIKICA                                  |                       |                                 |
| <b><u>MINIATURE SCHNAUZER (SALT &amp; PEPPER)</u></b>                                          |                                                                      |                       |                                 |
| JUNIOR DOG                                                                                     |                                                                      |                       |                                 |
| 34                                                                                             | TAN CHUAN GUAN & KELVIN NG LIP SIANG                                 | - ABSENT -            | - ABSENT -                      |
|                                                                                                | <b>XING YUE USCHI</b>                                                |                       |                                 |
|                                                                                                | DA TANG AO XUE SAN ER - XING YUE ILSO                                |                       |                                 |
|                                                                                                | IMP CN. 18.04.2024. JINCHENG GAO                                     |                       |                                 |
| JUNIOR DOG                                                                                     |                                                                      |                       |                                 |
| 35                                                                                             | KEITH CHEOW                                                          | RCC DOG               |                                 |
|                                                                                                | <b>VALEHAVEN HIRO FIDELIS</b>                                        |                       |                                 |
|                                                                                                | SG.CH.JOKERLAND'S BRIGHT FUTURE - SG.CH.VALEHAVEN MIRACULOUS LADYBUG |                       |                                 |
|                                                                                                | SW. 25.11.2023. KEITH CHEOW                                          |                       |                                 |
| JUNIOR DOG (CHAMPION JUNIOR IN SKC SHOWS)                                                      |                                                                      |                       |                                 |
| 36                                                                                             | TAN LAI HWA                                                          |                       | RCC DOG, JUNIOR CACIB DOG       |
|                                                                                                | <b>SG.CH.MOONLIGHT BAILEY</b>                                        |                       |                                 |
|                                                                                                | YI SHU PIN CARLY - YI SHU PIN GANITTA                                |                       |                                 |
|                                                                                                | IMP HK. 27.12.2023. LI KIN CHUNG                                     |                       |                                 |
| INTERMEDIATE DOG                                                                               |                                                                      |                       |                                 |
| 37                                                                                             | EUNICE CHOO FISHER                                                   | CC DOG                | CC DOG                          |
|                                                                                                | <b>VALEHAVEN THIS IS LOTTERIE</b>                                    |                       |                                 |
|                                                                                                | SG.CH.JOKERLAND'S BRIGHT FUTURE - SUNNY.WANG METALIC BLUE            |                       |                                 |
|                                                                                                | SW. 20.06.2023. KEITH CHEOW                                          |                       |                                 |
| INTERMEDIATE DOG                                                                               |                                                                      |                       |                                 |
| 38                                                                                             | NG KIAN AUN KENNY                                                    |                       |                                 |
|                                                                                                | <b>DAYCOMIO INDIGO</b>                                               |                       |                                 |
|                                                                                                | MODUS MAXIMUS INTERSTELLAR - FAVOURITE BLACK NOSE BECOMING QUEEN     |                       |                                 |
|                                                                                                | IMP BEL. 31.05.2023. GULEVICH A                                      |                       |                                 |
| CHAMPION DOG (CHAMPION SG WHELPED IN SKC SHOWS)                                                |                                                                      |                       |                                 |
| 39                                                                                             | AMEETA WILLIAMS                                                      | BOB                   | BOB, CACIB DOG                  |
|                                                                                                | <b>SG.CH.VALEHAVEN MILLION DREAMS</b>                                |                       |                                 |
|                                                                                                | SG.CH.JOKERLAND'S BRIGHT FUTURE - SUNNY.WANG METALIC BLUE            |                       |                                 |
|                                                                                                | SW. 20.06.2023. KEITH CHEOW                                          |                       |                                 |

|                                           |                                                                      |  |               |
|-------------------------------------------|----------------------------------------------------------------------|--|---------------|
| CHAMPION DOG (CHAMPION OPEN IN SKC SHOWS) |                                                                      |  |               |
| 40                                        | KEITH CHEOW                                                          |  | RBOB          |
|                                           | <b>SG.CH.INT.CH.A2O.CH.JOKERLAND'S BRIGHT FUTURE</b>                 |  |               |
|                                           | CH.RISEPARK FIRST CHOICE - CH.JOKERLAND'S LAVENDER BEADS             |  |               |
|                                           | IMP JPN. 03.06.2021. MASAMI URYU                                     |  |               |
| PUPPY BITCH                               |                                                                      |  |               |
| 41                                        | PARK SANG HUN                                                        |  | RCC BITCH     |
|                                           | <b>NOONBORA VALEHAVEN ROYAL LADY</b>                                 |  |               |
|                                           | SG.CH.JOKERLAND'S BRIGHT FUTURE - SG.GRCH.NOONBORA MARVELOUS HANNUEL |  |               |
|                                           | SW. 12.08.2024. PARK SANG HUN                                        |  |               |
| JUNIOR BITCH                              |                                                                      |  |               |
| 42                                        | TAN CHUAN GUAN & KELVIN NG LIP SIANG                                 |  | - ABSENT -    |
|                                           | <b>XING YUE YARO</b>                                                 |  |               |
|                                           | HANDSOME CHINA BRAVE HEART - CN.GCH.CN.CH.XING YUE SAYAN             |  |               |
|                                           | IMP CN. 29.12.2023. JINCHENG GAO                                     |  |               |
| INTERMEDIATE BITCH                        |                                                                      |  |               |
| 43                                        | KEITH CHEOW                                                          |  | CC BITCH, BOW |
|                                           | <b>VALEHAVEN MAGIC WOMAN</b>                                         |  |               |
|                                           | SG.CH.JOKERLAND'S BRIGHT FUTURE - VALEHAVEN MILAGE FENDI             |  |               |
|                                           | SW. 27.06.2023. KEITH CHEOW                                          |  |               |
| <b><u>MINIATURE SCHNAUZER (BLACK)</u></b> |                                                                      |  |               |
| PUPPY BITCH                               |                                                                      |  |               |
| 44                                        | TAN LAI HWA                                                          |  | CC BITCH, BOB |
|                                           | <b>MOONLIGHT MIDNIGHT LOEWE</b>                                      |  |               |
|                                           | YI SHU PIN UMBRA - YI SHU PIN YALL                                   |  |               |
|                                           | IMP HK. 01.08.2024. LI KIN CHUNG                                     |  |               |

**GROUP 2 SPECIALS**

**254<sup>TH</sup> SKC CHAMPIONSHIP DOG SHOW**

| BREED                       | BEST OF BREED | RES BEST OF BREED                                                                                                                                    | PUPPY | JUNIOR | INTERMEDIATE | SG WHELPED | OPEN |
|-----------------------------|---------------|------------------------------------------------------------------------------------------------------------------------------------------------------|-------|--------|--------------|------------|------|
| AFFENPINSCHER               | 32            | 31                                                                                                                                                   | 31    | -      | -            | 32         | -    |
| DOBERMANN                   | 33            | -                                                                                                                                                    | -     | -      | -            | -          | 33   |
| MINIATURE SCHNAUZER         | 39            | 40                                                                                                                                                   | 41    | 36     | 43           | 39         | 40   |
| MINIATURE SCHNAUZER (BLACK) | 44            | -                                                                                                                                                    | 44    | -      | -            | -          | -    |
|                             |               |                                                                                                                                                      |       |        |              |            |      |
|                             |               |                                                                                                                                                      |       |        |              |            |      |
|                             |               |                                                                                                                                                      |       |        |              |            |      |
|                             |               |                                                                                                                                                      |       |        |              |            |      |
| BEST EXHIBIT IN GROUP       | 39            | -                                                                                                                                                    | 41    | 36     | 43           | 39         | 40   |
| 2ND BEST EXHIBIT IN GROUP   | 40            | <div style="border: 1px solid black; padding: 10px; width: fit-content; margin: auto;">                     Judge's Signature                 </div> |       |        |              |            |      |
| 3RD BEST EXHIBIT IN GROUP   | 32            |                                                                                                                                                      |       |        |              |            |      |

## GROUP 2 SPECIALS

### 45<sup>TH</sup> FCI INTERNATIONAL CACIB SHOW

| BREED                            | BEST OF BREED | RES BEST OF BREED                                                                                                                             | PUPPY | JUNIOR | INTERMEDIATE | OPEN | CHAMPION |
|----------------------------------|---------------|-----------------------------------------------------------------------------------------------------------------------------------------------|-------|--------|--------------|------|----------|
| AFFENPINSCHER                    | 32            | -                                                                                                                                             | 31    | -      | -            | 32   | -        |
| DOBERMANN                        | 33            | -                                                                                                                                             | -     | -      | -            | 33   | -        |
| MINIATURE SCHNAUZER              | 39            | 43                                                                                                                                            | 41    | 36     | 43           | --   | 39       |
| MINIATURE SCHNAUZER (BLACK)      | -             | -                                                                                                                                             | 44    | -      | -            | -    | -        |
|                                  |               |                                                                                                                                               |       |        |              |      |          |
|                                  |               |                                                                                                                                               |       |        |              |      |          |
|                                  |               |                                                                                                                                               |       |        |              |      |          |
|                                  |               |                                                                                                                                               |       |        |              |      |          |
|                                  |               |                                                                                                                                               |       |        |              |      |          |
|                                  |               |                                                                                                                                               |       |        |              |      |          |
| <b>BEST EXHIBIT IN GROUP</b>     | <b>39</b>     | -                                                                                                                                             | 44    | 36     | 43           | 32   | 39       |
| <b>2ND BEST EXHIBIT IN GROUP</b> | <b>32</b>     | <div style="border: 1px solid black; display: inline-block; padding: 5px 20px;">                     Judge's Signature                 </div> |       |        |              |      |          |
| <b>3RD BEST EXHIBIT IN GROUP</b> | <b>33</b>     |                                                                                                                                               |       |        |              |      |          |



## GROUP 3

| <b><u>BULL TERRIER</u></b>                                             |                                                                                          | 254 <sup>TH</sup> SKC | 45 <sup>TH</sup> FCI                     |
|------------------------------------------------------------------------|------------------------------------------------------------------------------------------|-----------------------|------------------------------------------|
| CHAMPION BITCH (OPEN IN SKC SHOWS)                                     |                                                                                          |                       |                                          |
| 45                                                                     | TAN KEE JIN ANDREW                                                                       | CC BITCH, BOB         | CC BITCH, BOB,<br>CACIB BITCH            |
|                                                                        | <b>RO.CH.LU.CH.GUNPOWDER WITHOUT FUSE THE NORTHERN PROUBULLS</b>                         |                       |                                          |
|                                                                        | JCH(PT)ZLATAN DHONORIO DA QUINTA DA BULLVIT - LEONARDIA HURRY UP                         |                       |                                          |
|                                                                        | IMP POL. 15.09.2020. SILVA,ELISABETE PATRICIA PEREIRA                                    |                       |                                          |
| <b><u>CAIRN TERRIER</u></b>                                            |                                                                                          |                       |                                          |
| JUNIOR DOG (254 <sup>TH</sup> SKC & 45 <sup>TH</sup> FCI SHOWS ONLY)   |                                                                                          |                       |                                          |
| 46                                                                     | RACHEL LING JIAXIN                                                                       | CC DOG, RBOB          | CC DOG, BOW,<br>BOB, JUNIOR<br>CACIB DOG |
|                                                                        | <b>KLOUDNINE AJO BUGS KANIN</b>                                                          |                       |                                          |
|                                                                        | SG.CH.ROCCO'S COLLAR FANTASTICFIGARO - SG.CH.HJOOHOO'S EVERY GAME HJO PLAY               |                       |                                          |
|                                                                        | SW. 29.01.2024. YAN SHITING                                                              |                       |                                          |
| JUNIOR BITCH (254 <sup>TH</sup> SKC & 45 <sup>TH</sup> FCI SHOWS ONLY) |                                                                                          |                       |                                          |
| 47                                                                     | GOH JUNYONG & DEBORAH ONG                                                                | CC BITCH, BOB,<br>BOW | CC BITCH, RBOB,<br>JUNIOR CACIB<br>BITCH |
|                                                                        | <b>KLOUDNINE AJO ROANNER BEEP</b>                                                        |                       |                                          |
|                                                                        | SG.CH.ROCCO'S COLLAR FANTASTICFIGARO - SG.CH.HJOOHOO'S EVERY GAME HJO PLAY               |                       |                                          |
|                                                                        | SW. 29.01.2024. YAN SHITING                                                              |                       |                                          |
| <b><u>JACK RUSSELL TERRIER</u></b>                                     |                                                                                          |                       |                                          |
| INTERMEDIATE DOG                                                       |                                                                                          |                       |                                          |
| 48                                                                     | LOUIS WOO                                                                                | CC DOG, BOB,<br>BOW   | CC DOG, BOB,<br>BOW, CACIB<br>DOG        |
|                                                                        | <b>TOTGREE'S KAILINON</b>                                                                |                       |                                          |
|                                                                        | AIKIWA CUBA - TOTGREE'S KAILIA                                                           |                       |                                          |
|                                                                        | IMP ITA. 29.10.2023. SALVATORE SGURA                                                     |                       |                                          |
| INTERMEDIATE BITCH                                                     |                                                                                          |                       |                                          |
| 49                                                                     | TAN CHUAN GUAN & KELVIN NG LIP SIANG                                                     | CC BITCH, RBOB        | CC BITCH, RBOB,<br>CACIB BITCH           |
|                                                                        | <b>CANE MAESTRO SAYONARA</b>                                                             |                       |                                          |
|                                                                        | CH.RUS.JCH.RUS.CH.RKF.JCH.RKF.BT 1.JACKDIVISION FRIDAY I'M IN LOVE - CANE MAESTRO NARNIA |                       |                                          |
|                                                                        | IMP RUS. 17.06.2023. TSARIK S.V                                                          |                       |                                          |
| <b><u>NORWICH TERRIER</u></b>                                          |                                                                                          |                       |                                          |
| CHAMPION DOG (CHAMPION OPEN IN SKC SHOWS)                              |                                                                                          |                       |                                          |
| 50                                                                     | RACHELLE A YU                                                                            | BOB                   | BOB, CACIB<br>DOG                        |
|                                                                        | <b>SG.CH.A2O.CH.RAGUS BLUE YONDER</b>                                                    |                       |                                          |
|                                                                        | MICHAN SMOKE N MIRRORS – RAGUS SINGING THE BLUES                                         |                       |                                          |
|                                                                        | IMP UK. 15.09.2021. MRS L A CRAWLEY                                                      |                       |                                          |
| OPEN BITCH                                                             |                                                                                          |                       |                                          |
| 51                                                                     | CHANG WEILUAN                                                                            | CC BITCH, RBOB        | CC BITCH, RBOB,<br>CACIB BITCH           |
|                                                                        | <b>TRUFLA BEATITUDO ELI</b>                                                              |                       |                                          |
|                                                                        | C.I.B. DRUF ZAMLICZE (FCI) - MLCHPL.CH-PL.MK.MNE.FRYGA ULICHA                            |                       |                                          |
|                                                                        | IMP POL. 06.06.2023. ELZBIETA TOMECKA                                                    |                       |                                          |
| <b><u>SKYE TERRIER</u></b>                                             |                                                                                          |                       |                                          |
| CHAMPION DOG (CHAMPION INTERMEDIATE IN SKC SHOWS)                      |                                                                                          |                       |                                          |
| 52                                                                     | ESTHER LEONG                                                                             | BOB                   | BOB, CACIB<br>DOG                        |
|                                                                        | <b>SG.CH.SKYESDLIMIT WHOLE LOTTA LOVE</b>                                                |                       |                                          |
|                                                                        | SUP.CH.SKYESDLIMIT MYWAY OR DA HWY - CH.SKYESDLIMIT REIGN OF TERRIER                     |                       |                                          |
|                                                                        | IMP AUST. 21.04.2023. MRS L PELCHEN                                                      |                       |                                          |

|                                                                              |                                           |  |               |                               |
|------------------------------------------------------------------------------|-------------------------------------------|--|---------------|-------------------------------|
| <b>WEST HIGHLAND WHITE TERRIER</b>                                           |                                           |  | CC BITCH, BOB | CC BITCH, BOB,<br>CACIB BITCH |
| INTERMEDIATE BITCH (254 <sup>TH</sup> SKC & 45 <sup>TH</sup> FCI SHOWS ONLY) |                                           |  |               |                               |
| 53                                                                           | YAN SHITING                               |  |               |                               |
|                                                                              | HILLCLOUD ECHIDNA                         |  |               |                               |
|                                                                              | CH.ASHGATE KELVIN (JW) - HILLCLOUD DELPHI |  |               |                               |
|                                                                              | IMP UK. 29.06.2023. JORDAN CUMMINS        |  |               |                               |

### GROUP 3 SPECIALS

### 254<sup>TH</sup> SKC CHAMPIONSHIP DOG SHOW

| BREED                       | BEST OF BREED | RES BEST OF BREED                                                                                                      | PUPPY | JUNIOR | INTERMEDIATE | SG WHELPED | OPEN |
|-----------------------------|---------------|------------------------------------------------------------------------------------------------------------------------|-------|--------|--------------|------------|------|
| BULL TERRIER                | 45            | -                                                                                                                      | -     | -      | -            | -          | 45   |
| CAIRN TERRIER               | 47            | 46                                                                                                                     | -     | 47     | -            | -          | -    |
| JACK RUSSELL TERRIER        | 48            | 49                                                                                                                     | -     | -      | 48           | -          | -    |
| NORWICH TERRIER             | 50            | 51                                                                                                                     | -     | -      | -            | -          | 50   |
| SKYE TERRIER                | 52            | -                                                                                                                      | -     | -      | -            | -          | 52   |
| WEST HIGHLAND WHITE TERRIER | 53            | -                                                                                                                      | -     | -      | 53           | -          | -    |
|                             |               |                                                                                                                        |       |        |              |            |      |
|                             |               |                                                                                                                        |       |        |              |            |      |
| BEST EXHIBIT IN GROUP       | 48            | -                                                                                                                      | -     | 47     | 48           | -          | 50   |
| 2ND BEST EXHIBIT IN GROUP   | 50            | <div style="border: 1px solid black; padding: 5px; display: inline-block;">           Judge's Signature         </div> |       |        |              |            |      |
| 3RD BEST EXHIBIT IN GROUP   | 45            |                                                                                                                        |       |        |              |            |      |

## GROUP 3 SPECIALS

### 45<sup>TH</sup> FCI INTERNATIONAL CACIB SHOW

| BREED                       | BEST OF BREED | RES BEST OF BREED                                                                                                                        | PUPPY | JUNIOR | INTERMEDIATE | OPEN | CHAMPION |
|-----------------------------|---------------|------------------------------------------------------------------------------------------------------------------------------------------|-------|--------|--------------|------|----------|
| BULL TERRIER                | 45            | -                                                                                                                                        | -     | -      | -            | -    | 45       |
| CAIRN TERRIER               | 46            | 47                                                                                                                                       | -     | 46     | -            | -    | -        |
| JACK RUSSELL TERRIER        | 48            | 49                                                                                                                                       | -     | -      | 48           | -    | -        |
| NORWICH TERRIER             | 50            | 51                                                                                                                                       | -     | -      | -            | 51   | 50       |
| SKYE TERRIER                | 52            | -                                                                                                                                        | -     | -      | -            | -    | 52       |
| WEST HIGHLAND WHITE TERRIER | 53            | -                                                                                                                                        | -     | -      | 53           | -    | -        |
|                             |               |                                                                                                                                          |       |        |              |      |          |
|                             |               |                                                                                                                                          |       |        |              |      |          |
|                             |               |                                                                                                                                          |       |        |              |      |          |
| BEST EXHIBIT IN GROUP       | 48            | -                                                                                                                                        | -     | 46     | 48           | 51   | 45       |
| 2ND BEST EXHIBIT IN GROUP   | 45            | <div style="border: 1px solid black; padding: 5px; display: inline-block;">                     Judge's Signature                 </div> |       |        |              |      |          |
| 3RD BEST EXHIBIT IN GROUP   | 50            |                                                                                                                                          |       |        |              |      |          |

## GROUP 4

|                                                                          |                                                             |                       |                               |
|--------------------------------------------------------------------------|-------------------------------------------------------------|-----------------------|-------------------------------|
| <b><u>DACHSHUND (MINIATURE WIRED HAIR)</u></b>                           |                                                             | 254 <sup>TH</sup> SKC | 45 <sup>TH</sup> FCI          |
| INTERMEDIATE BITCH (254 <sup>TH</sup> & 45 <sup>TH</sup> FCI SHOWS ONLY) |                                                             | CC BITCH, BOB         | CC BITCH, BOB,<br>CACIB BITCH |
| 54                                                                       | DR DHANASEKARAN THANAPAL                                    |                       |                               |
|                                                                          | <b>COURTNEY LOVE VITORAZ</b>                                |                       |                               |
|                                                                          | LUX DEL PALATINO CHACCO BLUE - RUDOLFINAMADAMMECHIC VITORAZ |                       |                               |
|                                                                          | IMP CZECH. 04.03.2023. JAN BUŠTA                            |                       |                               |
|                                                                          |                                                             |                       |                               |

## GROUP 4 SPECIALS

### 254<sup>TH</sup> SKC CHAMPIONSHIP SHOW

| BREED                        | BEST OF BREED | RES BEST OF BREED | PUPPY | JUNIOR | INTERMEDIATE | SG WHELPED | OPEN |
|------------------------------|---------------|-------------------|-------|--------|--------------|------------|------|
| DACHSHUND (MWH)              | 54            | -                 | -     | -      | 54           | -          | -    |
|                              |               |                   |       |        |              |            |      |
| <b>BEST EXHIBIT IN GROUP</b> | 54            | -                 | -     | -      | 54           | -          | -    |
|                              |               | Judge's Signature |       |        |              |            |      |
|                              |               |                   |       |        |              |            |      |

## GROUP 4 SPECIALS

### 45<sup>TH</sup> FCI INTERNATIONAL CACIB SHOW

| BREED                        | BEST OF BREED | RES BEST OF BREED | PUPPY | JUNIOR | INTERMEDIATE | SG WHELPED | OPEN |
|------------------------------|---------------|-------------------|-------|--------|--------------|------------|------|
| DACHSHUND (MWH)              | 54            | -                 | -     | -      | 54           | -          | -    |
|                              |               |                   |       |        |              |            |      |
| <b>BEST EXHIBIT IN GROUP</b> | 54            | -                 | -     | -      | 54           | -          | -    |
|                              |               | Judge's Signature |       |        |              |            |      |
|                              |               |                   |       |        |              |            |      |

## GROUP 5

| <b><u>BASENJI</u></b>                                                 |                                                                                   | 254 <sup>TH</sup> SKC | 45 <sup>TH</sup> FCI        |
|-----------------------------------------------------------------------|-----------------------------------------------------------------------------------|-----------------------|-----------------------------|
| CHAMPION BITCH (CHAMPION OPEN IN SKC SHOWS)                           |                                                                                   |                       |                             |
| 55                                                                    | LINDA FOO                                                                         | BOB                   | BOB, CACIB BITCH            |
|                                                                       | <b>SG.CH.BULLDOBAS VOODOO IMPERIAL IPA</b>                                        |                       |                             |
|                                                                       | SE.CH.DK.CH.NASLEDIYE ETERA ATLAS HOLDING THE S - BULLDOBAS HOLY CHARITY          |                       |                             |
|                                                                       | IMP FIN. 07.12.2022. TAAVITSAINEN TIINA                                           |                       |                             |
| <b><u>CHOW CHOW</u></b>                                               |                                                                                   |                       |                             |
| CHAMPION DOG (OPEN IN SKC SHOWS)                                      |                                                                                   |                       |                             |
| 56                                                                    | HENG HEE YEOW                                                                     | CC DOG, BOB, BOW      | CC DOG, BOW, BOB, CACIB DOG |
|                                                                       | <b>CH DREAMLAND'S CAPTAIN CHAOS AT TANGPANDORA</b>                                |                       |                             |
|                                                                       | GCHG CH DREAMLAND'S GAME CHANGER - CH AYRAN HONG SPICE GIRL                       |                       |                             |
|                                                                       | IMP THAI. 10.04.2022. LINDA BRANTLEY/MICHAEL BRANTLEY/PAULO CLERICE               |                       |                             |
| CHAMPION DOG (13 <sup>TH</sup> A2O & 45 <sup>TH</sup> FCI SHOWS ONLY) |                                                                                   |                       |                             |
| 57                                                                    | NGIAM YUAN SONG DAIMLER                                                           |                       |                             |
|                                                                       | <b>SG.CH.LONG FENG HAN SEOUL-OH AT TIANQUAN</b>                                   |                       |                             |
|                                                                       | NORIC.CH.NORD&FI UCH VDH.LONG FENG CAPTAIN JACK SPARROW - LONG FENG MME CRABBOFIX |                       |                             |
|                                                                       | IMP SWE. 17.10.2019. HEDENGRAN LENE                                               |                       |                             |
| CHAMPION DOG (CHAMPION OPEN IN SKC SHOWS)                             |                                                                                   |                       |                             |
| 58                                                                    | HENG HEE YEOW                                                                     | <b>- SCRATCH -</b>    |                             |
|                                                                       | <b>SG.CH.PHI.CH.IND.KOR.CH.MR BANNER VON WEST STAR KENNEL AT TANGPANDORA</b>      |                       |                             |
|                                                                       | EASTERN-MAGIC FLY ME SAFE - EASTERN-MAGIC KITTY FLY AWAY                          |                       |                             |
|                                                                       | IMP IND. 22.10.2018. KIKI PRATNA                                                  |                       |                             |
| CHAMPION BITCH (INTERMEDIATE IN SKC SHOWS)                            |                                                                                   |                       |                             |
| 59                                                                    | HENG HEE YEOW                                                                     | CC BITCH, RBOB        | CC BITCH, RBOB, CACIB BITCH |
|                                                                       | <b>TH.CH.AYRAN HONG GOLDEN ICON AT TANGPANDORA</b>                                |                       |                             |
|                                                                       | AYRAN HONG DREAMLAND DON'T STOP BELIEVIN' - AYRAN HONG NEVER SAY NEVER            |                       |                             |
|                                                                       | IMP THAI. 12.04.2023. PAULO CLERICE                                               |                       |                             |
| <b><u>FINNISH LAPPHUND</u></b>                                        |                                                                                   |                       |                             |
| JUNIOR DOG                                                            |                                                                                   |                       |                             |
| 60                                                                    | TEOH YIN XUAN & FANNY NG                                                          | RCC DOG               | JUNIOR CACIB DOG            |
|                                                                       | <b>SILVER ZAMORAS ETERNAL FORCE ELTON</b>                                         |                       |                             |
|                                                                       | FI.CH.PAKKASPEIKON PAARU - SE.CH.BRICKEBOS VINTRA                                 |                       |                             |
|                                                                       | IMP SWE. 02.03.2024. GARDELIN SANDRA                                              |                       |                             |
| JUNIOR DOG                                                            |                                                                                   |                       |                             |
| 61                                                                    | TEOH YIN XUAN & THUM EE LIN                                                       | CC DOG, RBOB          | CC DOG, BOW, BOB            |
|                                                                       | <b>SILVER ZAMORAS ETERNAL FORCE EXXON</b>                                         |                       |                             |
|                                                                       | FI.CH.PAKKASPEIKON PAARU - SE.CH.BRICKEBOS VINTRA                                 |                       |                             |
|                                                                       | IMP SWE. 02.03.2024. GARDELIN SANDRA                                              |                       |                             |
| PUPPY BITCH                                                           |                                                                                   |                       |                             |
| 62                                                                    | TEOH YIN XUAN                                                                     | CC BITCH, BOW, BOB    | CC BITCH                    |
|                                                                       | <b>SILVER ZAMORAS PANDA EXPRESS</b>                                               |                       |                             |
|                                                                       | FI.UCH.LT.CH.EXPECTED AMERICANO - SE.CH.SAMERAJERNA'S QUEETS                      |                       |                             |
|                                                                       | IMP SWE. 10.07.2024. GARDELIN SANDRA                                              |                       |                             |
|                                                                       |                                                                                   |                       |                             |
|                                                                       |                                                                                   |                       |                             |

|                                             |                                                                                                    |                    |                                        |
|---------------------------------------------|----------------------------------------------------------------------------------------------------|--------------------|----------------------------------------|
| <b><u>KEESHOUND</u></b>                     |                                                                                                    |                    |                                        |
| PUPPY DOG                                   |                                                                                                    |                    |                                        |
| 63                                          | TEOH YIN XUAN                                                                                      | CC DOG, RBOB       | CC DOG                                 |
|                                             | <b>VENUS VITIA DES SABLES DU MONT OLYMPE</b>                                                       |                    |                                        |
|                                             | MOETICA SHINING STAR - THE WONDERFUL THOK DES SABLES DU MONT OLYMPE                                |                    |                                        |
|                                             | IMP FRA. 28.05.2024. MONSARRAT KEVIN                                                               |                    |                                        |
| JUNIOR BITCH                                |                                                                                                    |                    |                                        |
| 64                                          | TEOH YIN XUAN                                                                                      | CC BITCH, BOB, BOW | CC BITCH, BOB, BOW, JUNIOR CACIB BITCH |
|                                             | <b>UNDER SHINING MOON OF SILVER HOWLS</b>                                                          |                    |                                        |
|                                             | MOETICA SHINING STAR - FCS.CH.INT.CH.FJ.CH.SILVER DIAMOND                                          |                    |                                        |
|                                             | IMP FRA. 11.12.2023. BRULIN MARION                                                                 |                    |                                        |
| <b><u>POMERANIAN</u></b>                    |                                                                                                    |                    |                                        |
| OPEN DOG                                    |                                                                                                    |                    |                                        |
| 65                                          | NICHOL TAN LIAT HAW                                                                                | CC DOG             | CC DOG                                 |
|                                             | <b>FLUKE POM'S KUN PON</b>                                                                         |                    |                                        |
|                                             | WE STAR'S BLEEDING LOVE - FLUKE POM'S MAPLE                                                        |                    |                                        |
|                                             | IMP MYS. 30.07.2021. CHANAKAN NGERNTASUK                                                           |                    |                                        |
| CHAMPION DOG (CHAMPION OPEN IN SKC SHOWS)   |                                                                                                    |                    |                                        |
| 66                                          | JONATHAN LIM                                                                                       | RBOB               |                                        |
|                                             | <b>SG.CH.TWN.CH.THAI.CH.HEARTY CHARCOL DE L'AMOUR</b>                                              |                    |                                        |
|                                             | GCH.AM.TH.CH.WE STAR'S N HEARTY'S BORN TO BE THE STAR - TH.CH.HEARTY FANXY SEVEN HOT N EZ @ESTE'RA |                    |                                        |
|                                             | IMP THA. 21.10.2021. PAPITCHAYA SUKONNOI                                                           |                    |                                        |
| CHAMPION DOG (CHAMPION OPEN IN SKC SHOWS)   |                                                                                                    |                    |                                        |
| 67                                          | FAITH CHEOW                                                                                        | BOB                | BOB, CACIB DOG                         |
|                                             | <b>SG.CH.TH.CH.CHALEE SKY BRIGHT SUPREME</b>                                                       |                    |                                        |
|                                             | TH.CH.CHALEE'S TROY TOP MAN - CHALEE CLASSIC MOMENT                                                |                    |                                        |
|                                             | IMP THA. 16.02.2021. ANCHALEE PANBOONLERT                                                          |                    |                                        |
| JUNIOR BITCH (CHAMPION JUNIOR IN SKC SHOWS) |                                                                                                    |                    |                                        |
| 68                                          | FAITH CHEOW                                                                                        |                    | JUNIOR CACIB BITCH                     |
|                                             | <b>CHALEE &amp; LIMSKY LOVEY DOVEY LANA</b>                                                        |                    |                                        |
|                                             | CHALEE & PARADIGM SUNSHINE - CH.BEWELL/S DADA GIVE THE EMPRESS BAITANG                             |                    |                                        |
|                                             | IMP THAI. 02.04.2024. ANCHALEE PANBOONLERT                                                         |                    |                                        |
| INTERMEDIATE BITCH                          |                                                                                                    |                    |                                        |
| 69                                          | NICHOL TAN LIAT HAW                                                                                | CC BITCH, BOW      | CC BITCH, BOW, RBOB, CACIB BITCH       |
|                                             | <b>SANTANA POM'S ALICA</b>                                                                         |                    |                                        |
|                                             | WW.TH.GR.PHIL.MYS.VN.CH.SANTANA ONE MORE SHOW - SANTANA POM'S ALICA                                |                    |                                        |
|                                             | IMP THAI. 20.05.2023. SANJANA DENKITVORAVONG                                                       |                    |                                        |
| <b><u>SHIBA INU</u></b>                     |                                                                                                    |                    |                                        |
| JUNIOR DOG                                  |                                                                                                    |                    |                                        |
| 70                                          | CHERLYN PECK & MAVIS NGAN                                                                          | CC DOG, BOB, BOW   | CC DOG, BOB, JUNIOR CACIB DOG          |
|                                             | <b>VORMUND HELIOS DREAMWEAVER</b>                                                                  |                    |                                        |
|                                             | MEISHU NO RYUZIN GO HARIMAYA JP VORMUND - VORMUND MILLION NAF DOLLAR BABY                          |                    |                                        |
|                                             | IMP JAP. 29.11.2023. ELIZABETH DUNHILL                                                             |                    |                                        |
| PUPPY BITCH                                 |                                                                                                    |                    |                                        |
| 71                                          | CHAU YAT WAH & HUTCH CHAU                                                                          | CC BITCH, RBOB     | CC BITCH                               |
|                                             | <b>PAWFESSIOAL XXIV ELSA</b>                                                                       |                    |                                        |
|                                             | SG.CH.PAWFESSIOAL XVII ONYX - ZHENBANG TASTY                                                       |                    |                                        |
|                                             | SW. 14.07.2024. CHAU YAT WAH & HUTCH CHAU                                                          |                    |                                        |

|                                                                   |              |             |                           |
|-------------------------------------------------------------------|--------------|-------------|---------------------------|
| <b><u>SIBERIAN HUSKY</u></b>                                      |              | CC DOG, BOB | CC DOG, BOB,<br>CACIB DOG |
| OPEN DOG                                                          |              |             |                           |
| 72                                                                | EUPHEMIA LEE |             |                           |
| <b>ORBITAL COSMO CONTINENTAL FLYING SPUR</b>                      |              |             |                           |
| INA.THAI.CH.KRISTARI'S FORTUNE HUNTER - PARAGON'S GREATEST GIVING |              |             |                           |
| IMP INA. 21.12.2018. BENNY KOESLAN                                |              |             |                           |

## GROUP 5 SPECIALS

### 254<sup>TH</sup> SKC CHAMPIONSHIP DOG SHOW

| BREED                     | BEST OF BREED | RES BEST OF BREED                                                                                                                 | PUPPY | JUNIOR | INTERMEDIATE | SG WHELPED | OPEN |
|---------------------------|---------------|-----------------------------------------------------------------------------------------------------------------------------------|-------|--------|--------------|------------|------|
| BASENJI                   | 55            | -                                                                                                                                 | -     | -      | -            | -          | 55   |
| CHOW CHOW                 | 56            | 59                                                                                                                                | -     | -      | 59           | -          | 56   |
| FINNISH LAPPHUND          | 62            | 61                                                                                                                                | 62    | 61     |              |            |      |
| KEESHOUND                 | 64            | 63                                                                                                                                | 63    | 64     | -            | -          | -    |
| POMERANIAN                | 67            | 66                                                                                                                                | -     | 68     | 69           | -          | 67   |
| SHIBA INU                 | 70            | 71                                                                                                                                | 71    | 70     | -            | -          | -    |
| SIBERIAN HUSKY            | 72            | -                                                                                                                                 | -     | -      | -            | -          | 72   |
|                           |               |                                                                                                                                   |       |        |              |            |      |
| BEST EXHIBIT IN GROUP     | 56            | -                                                                                                                                 | 71    | 68     | 69           | -          | 56   |
| 2ND BEST EXHIBIT IN GROUP | 72            | <div style="border: 1px solid black; padding: 5px; width: fit-content; margin: auto;">           Judge's Signature         </div> |       |        |              |            |      |
| 3RD BEST EXHIBIT IN GROUP | 67            |                                                                                                                                   |       |        |              |            |      |

## GROUP 5 SPECIALS

### 45<sup>TH</sup> FCI INTERNATIONAL CACIB SHOW

| BREED                     | BEST OF BREED | RES BEST OF BREED                                                                                                                        | PUPPY | JUNIOR | INTERMEDIATE | OPEN | CHAMPION |
|---------------------------|---------------|------------------------------------------------------------------------------------------------------------------------------------------|-------|--------|--------------|------|----------|
| BASENJI                   | 55            | -                                                                                                                                        | -     | -      | -            | -    | 55       |
| CHOW CHOW                 | 56            | 59                                                                                                                                       | -     | -      | -            | -    | 56       |
| FINNISH LAPPHUND          | 61            | -                                                                                                                                        | 62    | 61     | -            | -    | -        |
| KEESHOUND                 | 64            | -                                                                                                                                        | 63    | 64     | -            | -    | -        |
| POMERANIAN                | 67            | 69                                                                                                                                       | -     | 68     | -            | 69   | 67       |
| SHIBA INU                 | 70            | -                                                                                                                                        | 71    | 70     | -            | -    | -        |
| SIBERIAN HUSKY            | 72            | -                                                                                                                                        | -     | -      | -            | 72   | -        |
|                           |               |                                                                                                                                          |       |        |              |      |          |
| BEST EXHIBIT IN GROUP     | 56            | -                                                                                                                                        | 62    | 64     | -            | 69   | 56       |
| 2ND BEST EXHIBIT IN GROUP | 67            | <div style="border: 1px solid black; padding: 5px; display: inline-block;">                     Judge's Signature                 </div> |       |        |              |      |          |
| 3RD BEST EXHIBIT IN GROUP | 64            |                                                                                                                                          |       |        |              |      |          |



## GROUP 7

|                                            |                                                              |                       |                                  |
|--------------------------------------------|--------------------------------------------------------------|-----------------------|----------------------------------|
| <b><u>HUNGARIAN VIZSLA</u></b>             |                                                              | 254 <sup>TH</sup> SKC | 45 <sup>TH</sup> FCI             |
| CHAMPION DOG (CHAMPION OPEN IN SKC SHOWS)  |                                                              |                       |                                  |
| 73                                         | CARL MAGNUS R SANDSTROM                                      | BOB                   | BOB, CACIB<br>DOG                |
|                                            | <b>SG.CH.HANAFOR KARILL DANTE</b>                            |                       |                                  |
|                                            | CH.GAMEDAY ROUBO BASILIO AT HANAFOR - CH.HANAFOR DRAMA QUEEN |                       |                                  |
|                                            | IMP AUST. 03.07.2023. MRS F HARRIS & MR J COOPER             |                       |                                  |
| <b><u>HUNGARIAN WIREDHAired VIZSLA</u></b> |                                                              | CC BITCH, BOB         | CC BITCH,<br>BOB, CACIB<br>BITCH |
| INTERMEDIATE BITCH                         |                                                              |                       |                                  |
| 74                                         | KEONG MEI SZE                                                |                       |                                  |
|                                            | <b>LASAIR BRAVO BEATRICE</b>                                 |                       |                                  |
|                                            | CH.PANNON-BOX ERDESZ - LASAIR GLORIOUS GRETA                 |                       |                                  |
|                                            | IMP AUST. 18.06.2023. DR M NARDI                             |                       |                                  |

**GROUP 7 SPECIALS**

**254<sup>TH</sup> SKC CHAMPIONSHIP DOG SHOW**

| BREED                                 | BEST OF BREED | RES BEST OF BREED | PUPPY | JUNIOR | INTERMEDIATE | SG WHELPED | OPEN              |
|---------------------------------------|---------------|-------------------|-------|--------|--------------|------------|-------------------|
| HUNGARIAN VIZSLA                      | 73            | -                 | -     | -      | -            | -          | 73                |
| HUNGARIAN WIREDHAISED VIZLA           | 74            | -                 | -     | -      | 74           | -          | -                 |
|                                       |               |                   |       |        |              |            |                   |
| BEST EXHIBIT IN GROUP                 | 73            | -                 | -     | -      | 74           | -          | 73                |
| 2 <sup>ND</sup> BEST EXHIBIT IN GROUP | 74            |                   |       |        |              |            |                   |
|                                       |               |                   |       |        |              |            | Judge's Signature |

**GROUP 7 SPECIALS**

**45<sup>TH</sup> FCI INTERNATIONAL CACIB SHOW**

| BREED                                 | BEST OF BREED | RES BEST OF BREED | PUPPY | JUNIOR | INTERMEDIATE | OPEN              | CHAMPION |
|---------------------------------------|---------------|-------------------|-------|--------|--------------|-------------------|----------|
| HUNGARIAN VIZSLA                      | 73            | -                 | -     | -      | -            | -                 | 73       |
| HUNGARIAN WIREDHAISED VIZLA           | 74            | -                 | -     | -      | 74           | -                 | -        |
|                                       |               |                   |       |        |              |                   |          |
| BEST EXHIBIT IN GROUP                 | 73            | -                 | -     | -      | 74           | -                 | 73       |
| 2 <sup>ND</sup> BEST EXHIBIT IN GROUP | 74            |                   |       |        |              |                   |          |
|                                       |               |                   |       |        |              | Judge's Signature |          |

## GROUP 8

| <b><u>AMERICAN COCKER SPANIEL</u></b>                                                              |                                                                                                 | 254 <sup>TH</sup> SKC | 45 <sup>TH</sup> FCI       |
|----------------------------------------------------------------------------------------------------|-------------------------------------------------------------------------------------------------|-----------------------|----------------------------|
| CHAMPION DOG (CHAMPION OPEN IN SKC SHOW) (253 <sup>RD</sup> SKC & 13 <sup>TH</sup> A2O SHOWS ONLY) |                                                                                                 |                       |                            |
| 75                                                                                                 | HEIDI CHOW                                                                                      |                       |                            |
|                                                                                                    | <b>CH/24.5.SG.CH.KAZUYO QUEEN JP JET BLACK</b>                                                  |                       |                            |
|                                                                                                    | INT.CH.(AM.CHN.MYS)GCHP(AM)ENCORE'S N KAZUYO QUEEN I'LL DO ANYTHING – KAZUYO QUEEN JP AMATERASU |                       |                            |
|                                                                                                    | IMP JPN. 19.11.2022. KAZUYO NAGASAKA                                                            |                       |                            |
| CHAMPION BITCH (INTERMEDIATE IN SKC SHOWS)                                                         |                                                                                                 |                       |                            |
| 76                                                                                                 | DENYSE WANG/JUNIE YIP & KELVIN NG                                                               | CC BITCH, BOB         | CC BITCH, BOB, CACIB BITCH |
|                                                                                                    | <b>KOR.JRCH.FLAWLESSLY CAMELLIA</b>                                                             |                       |                            |
|                                                                                                    | INT.CH.AM.CH.SILVERHALL STATUS QUO - KOR.CH.TEAM OJ'S & FLAWLESSLY ELSA                         |                       |                            |
|                                                                                                    | IMP KOR. 14.11.2023 HEO SEOK-MOON                                                               |                       |                            |
| <b><u>ENGLISH COCKER SPANIEL</u></b>                                                               |                                                                                                 |                       |                            |
| OPEN DOG                                                                                           |                                                                                                 | CC DOG, BOB           | CC DOG, BOB, CACIB DOG     |
| 77                                                                                                 | MILLA BJERKELAND & EUGENE TAY                                                                   |                       |                            |
|                                                                                                    | <b>JUMBANA STRONG UNIQUE ONE</b>                                                                |                       |                            |
|                                                                                                    | JUMBANA MAJOR - JUMBANA MYSTERY BEAUTY                                                          |                       |                            |
|                                                                                                    | IMP UK. 05.09.2021. MR N G PRESSWELL                                                            |                       |                            |
| <b><u>GOLDEN RETRIEVER</u></b>                                                                     |                                                                                                 |                       |                            |
| PUPPY DOG                                                                                          |                                                                                                 |                       |                            |
| 78                                                                                                 | DANIEL ONG                                                                                      | CC DOG                | CC DOG                     |
|                                                                                                    | <b>DANSUE ICHI RIDE THE LIGHTNING</b>                                                           |                       |                            |
|                                                                                                    | SILVERWIND SCOUT THE MASTER CHEF - SG.CH.A2O.CH.DANSUE BLUBEAR QUEEN ICHI                       |                       |                            |
|                                                                                                    | SW. 27.05.2024. DANIEL ONG                                                                      |                       |                            |
| OPEN DOG                                                                                           |                                                                                                 |                       |                            |
| 79                                                                                                 | NICHOL TAN LIAT HAW                                                                             | - SCRATCH -           | - SCRATCH -                |
|                                                                                                    | <b>SILVERWIND SCOUT THE MASTER CHIEF</b>                                                        |                       |                            |
|                                                                                                    | KOR.CH.OCEAN PALACE'S THE SHOW GOES ON - SG.CH.SHALOMGOLDEN TRIPLE CONFORMATION                 |                       |                            |
|                                                                                                    | SW. 11.08.2022. NICHOL TAN LIAT HAW                                                             |                       |                            |
| CHAMPION DOG (CHAMPION OPEN IN SKC SHOWS)                                                          |                                                                                                 |                       |                            |
| 80                                                                                                 | NANDHINI TAMILSELVAM                                                                            |                       |                            |
|                                                                                                    | <b>SG.CH.CAN.GRCH.SUNKOZI ROCK AND ROLL ALL NIGHT</b>                                           |                       |                            |
|                                                                                                    | STARRISE N POWDERHORN NOT MY FIRST RODEO - GCHB GOLDDPAWS GOT TWENTY TWENTY VISION AT SUNKOZI   |                       |                            |
|                                                                                                    | IMP CAN. 01.07.2022. BEVERLEY FARQUHAR                                                          |                       |                            |
| CHAMPION DOG (CHAMPION OPEN IN SKC SHOWS)                                                          |                                                                                                 |                       |                            |
| 81                                                                                                 | NICHOL TAN LIAT HAW                                                                             |                       |                            |
|                                                                                                    | <b>SG.CH.MARYLAND'S GOLD KING MERLIN</b>                                                        |                       |                            |
|                                                                                                    | MARYLAND'S GOLD GO FOR VICTORY - GOLDEN SKY'S LUNA                                              |                       |                            |
|                                                                                                    | IMP INA. 09.04.2022. FX ANDY GUNAWAN                                                            |                       |                            |
| CHAMPION DOG (CHAMPION SG WHELPED IN SKC SHOWS)                                                    |                                                                                                 |                       |                            |
| 82                                                                                                 | TAN XIN XIANG RYAN                                                                              | RBOB                  | BOB, CACIB DOG             |
|                                                                                                    | <b>SG.CH.GOLDENSPUDZ ALPHA O WIND OF FREEDOM</b>                                                |                       |                            |
|                                                                                                    | SG.SUP.CH.AM.CH.NAUTILUS ALEXANDER THE GREAT - SG.CH.DANSUE TIMBERBLU SPUDNIK OF THE CENTURY    |                       |                            |
|                                                                                                    | SW. 06.04.2022. SHERMAINE NG SHER MIN                                                           |                       |                            |

|                                                       |                                                                         |  |               |                      |
|-------------------------------------------------------|-------------------------------------------------------------------------|--|---------------|----------------------|
| CHAMPION DOG (CHAMPION OPEN IN SKC SHOWS)             |                                                                         |  |               |                      |
| 83                                                    | PAIGE CHIAM                                                             |  | BOB           |                      |
|                                                       | <b>SG.CH.DANSUE TWODAM FREEDOM</b>                                      |  |               |                      |
|                                                       | INA.CH.DAIMER LOUIS OF MY BUDDY'S – JIN SE HUI HUANG XASKO WHATS GOLDEN |  |               |                      |
|                                                       | SW. 02.07.2021. DANIEL ONG KOH AIK                                      |  |               |                      |
| PUPPY BITCH                                           |                                                                         |  |               |                      |
| 84                                                    | JACINTA KWEE                                                            |  |               |                      |
|                                                       | <b>DANSUE ICHI ENTER SANDMAN</b>                                        |  |               |                      |
|                                                       | SILVERWIND SCOUT THE MASTER CHEF - SG.CH.A2O.CH.DANSUE BLUBEAR          |  |               |                      |
|                                                       | QUEEN ICHI                                                              |  |               |                      |
| SW. 27.05.2024. DANIEL ONG                            |                                                                         |  |               |                      |
| PUPPY BITCH                                           |                                                                         |  |               |                      |
| 85                                                    | DANIEL ONG                                                              |  | CC BITCH, BOW | RCC BITCH            |
|                                                       | <b>DANSUE ICHI REBEL OF BABYLON</b>                                     |  |               |                      |
|                                                       | SILVERWIND SCOUT THE MASTER CHEF - SG.CH.A2O.CH.DANSUE BLUBEAR          |  |               |                      |
|                                                       | QUEEN ICHI                                                              |  |               |                      |
| SW. 27.05.2024. DANIEL ONG                            |                                                                         |  |               |                      |
| OPEN BITCH                                            |                                                                         |  |               |                      |
| 86                                                    | NICHOL TAN LIAT HAW                                                     |  | RCC BITCH     | CC BITCH,<br>BOW     |
|                                                       | <b>GOLDEN HEAVEN KAYTIE</b>                                             |  |               |                      |
|                                                       | GOLDEN HERMES JUST MARLEX - GOLDEN HEAVEN THE WONDER WOMAN              |  |               |                      |
|                                                       | IMP INA. 18.06.2021. CHRISTOPHER EKA JAYA                               |  |               |                      |
| CHAMPION BITCH (CHAMPION OPEN IN SKC SHOWS)           |                                                                         |  |               |                      |
| 87                                                    | JULIE TAN                                                               |  |               | RBOB, CACIB<br>BITCH |
|                                                       | <b>SG.CH.PHIL.CH.GOLDENHILLS PHL Q'OF MYLIFE</b>                        |  |               |                      |
|                                                       | PHIL.GRCH.AM.CH.GOLDENHILLS DREAM TEAM (USA) - PHIL.CH.RUSH HILL'S      |  |               |                      |
|                                                       | HAIR APPARENT AT GOLDEN HILLS (USA)                                     |  |               |                      |
| IMP PHIL. 30.08.2022. MICHAEL ALDEGUER & CAREN TUDTUD |                                                                         |  |               |                      |

**GROUP 8 SPECIALS**

**254<sup>TH</sup> SKC CHAMPIONSHIP DOG SHOW**

| BREED                                 | BEST OF BREED | RES BEST OF BREED                                                                                  | PUPPY | JUNIOR | INTERMEDIATE | SG WHELPED | OPEN |
|---------------------------------------|---------------|----------------------------------------------------------------------------------------------------|-------|--------|--------------|------------|------|
| AMERICAN COCKER SPANIEL               | 76            | -                                                                                                  | -     | -      | 76           | -          | -    |
| ENGLISH COCKER SPANIEL                | 77            | -                                                                                                  | -     | -      | -            | -          | 77   |
| GOLDEN RETRIEVER                      | 83            | 82                                                                                                 | 85    | -      | -            | -          | 83   |
|                                       |               |                                                                                                    |       |        |              |            |      |
| BEST EXHIBIT IN GROUP                 | 83            | -                                                                                                  | 85    | -      | 76           | -          | 83   |
| 2 <sup>ND</sup> BEST EXHIBIT IN GROUP | 76            | <div style="border: 1px solid black; padding: 5px; display: inline-block;">Judge's Signature</div> |       |        |              |            |      |
| 3 <sup>RD</sup> BEST EXHIBIT IN GROUP | 82            |                                                                                                    |       |        |              |            |      |

**GROUP 8 SPECIALS**

**45<sup>TH</sup> FCI INTERNATIONAL CACIB SHOW**

| BREED                                 | BEST OF BREED | RES BEST OF BREED                                                                                  | PUPPY | JUNIOR | INTERMEDIATE | OPEN | CHAMPION |
|---------------------------------------|---------------|----------------------------------------------------------------------------------------------------|-------|--------|--------------|------|----------|
| AMERICAN COCKER SPANIEL               | 76            | -                                                                                                  | -     | -      | -            | -    | 76       |
| ENGLISH COCKER SPANIEL                | 77            | -                                                                                                  | -     | -      | -            | 77   | -        |
| GOLDEN RETRIEVER                      | 82            | 87                                                                                                 | 85    | -      | -            | 86   | 82       |
|                                       |               |                                                                                                    |       |        |              |      |          |
| BEST EXHIBIT IN GROUP                 | 82            | -                                                                                                  | 85    | -      | -            | 77   | 82       |
| 2 <sup>ND</sup> BEST EXHIBIT IN GROUP | 77            | <div style="border: 1px solid black; padding: 5px; display: inline-block;">Judge's Signature</div> |       |        |              |      |          |
| 3 <sup>RD</sup> BEST EXHIBIT IN GROUP | 76            |                                                                                                    |       |        |              |      |          |

## GROUP 9

| <b><u>BICHON FRISE</u></b>                                                                                     |                                                                                                | 254 <sup>TH</sup> SKC | 45 <sup>TH</sup> FCI                     |
|----------------------------------------------------------------------------------------------------------------|------------------------------------------------------------------------------------------------|-----------------------|------------------------------------------|
| OPEN DOG                                                                                                       |                                                                                                |                       |                                          |
| 88                                                                                                             | PARK SANG HUN                                                                                  | CC DOG                | CC DOG, BOB,<br>BOW, CACIB<br>DOG        |
|                                                                                                                | <b>TOP &amp; TOP BICHON STORY</b>                                                              |                       |                                          |
|                                                                                                                | CH (NT.G.KOR) DOGNEWS'S F THE ONLY KIND OF GREAT IDOL JB - KOR.CH.TOP AND TOP BICHON HIGH HIGH |                       |                                          |
|                                                                                                                | IMP KOR. 06.06.2023. KIM, YE-RIN                                                               |                       |                                          |
| PUPPY BITCH                                                                                                    |                                                                                                |                       |                                          |
| 89                                                                                                             | PARK SANG HUN                                                                                  |                       | RCC BITCH                                |
|                                                                                                                | <b>NOONBORA MALA TANGHULU</b>                                                                  |                       |                                          |
|                                                                                                                | SG.CH. MACAN OF TEAM FIRST - CASANOVA AERYI WHITE WINE                                         |                       |                                          |
|                                                                                                                | SW. 16.06.2024. PARK SANG HUN                                                                  |                       |                                          |
| INTERMEDIATE BITCH                                                                                             |                                                                                                |                       |                                          |
| 90                                                                                                             | PARK SANG HUN                                                                                  | CC BITCH,<br>BOW, BOB | CC BITCH                                 |
|                                                                                                                | <b>TOP AND TOP BICHON SONADOR</b>                                                              |                       |                                          |
|                                                                                                                | KOR.CH.TOP AND TOP AMG - TOP AND TOP BICHON MAYYAS                                             |                       |                                          |
|                                                                                                                | IMP KOR. 25.09.2023. KIM, YE-RIN                                                               |                       |                                          |
| CHAMPION BITCH (CHAMPION INTERMEDIATE IN SKC SHOW)                                                             |                                                                                                |                       |                                          |
| 91                                                                                                             | SIAH JIA AI                                                                                    | RBOB                  | RBOB, CACIB<br>BITCH                     |
|                                                                                                                | <b>SG.CH.NOONBORA AMA EBI</b>                                                                  |                       |                                          |
|                                                                                                                | SG.CH.TOP AND TOP BICHON TOP GUN - CASANOVA AERYI WHITE WINE FCI                               |                       |                                          |
|                                                                                                                | SW. 13.04.2023. PARK SANG HUN                                                                  |                       |                                          |
| <b><u>CAVALIER KING CHARLES SPANIEL</u></b>                                                                    |                                                                                                |                       |                                          |
| CHAMPION DOG (CHAMPION INTERMEDIATE IN SKC SHOWS)<br>(253 <sup>RD</sup> SKC & 13 <sup>TH</sup> A20 SHOWS ONLY) |                                                                                                |                       |                                          |
| 92                                                                                                             | CHLOE XIE                                                                                      |                       |                                          |
|                                                                                                                | <b>SG.CH.WEST ROSE JP CHARLESTON AU SONGEUR</b>                                                |                       |                                          |
|                                                                                                                | NOBLESSE OBLIGE DE LA FIEFFE - WEST ROSE JP MARI GOLD AU SONGEUR                               |                       |                                          |
|                                                                                                                | IMP JPN. 01.06.2023. ERIKO KATSUYAMA                                                           |                       |                                          |
| JUNIOR BITCH                                                                                                   |                                                                                                |                       |                                          |
| 93                                                                                                             | JOANNE SEOW                                                                                    | CC BITCH,<br>RBOB     | CC BITCH,<br>RBOB, JUNIOR<br>CACIB BITCH |
|                                                                                                                | <b>CABROOK TAKE IT EASY</b>                                                                    |                       |                                          |
|                                                                                                                | PASCAVALE CHRISTIAN - CH.CABROOK AM I PRETTY ENOUGH                                            |                       |                                          |
|                                                                                                                | IMP AUST. 09.04.2024. MRS S PATERSON                                                           |                       |                                          |
| CHAMPION BITCH (CHAMPION OPEN IN SKC SHOW)                                                                     |                                                                                                |                       |                                          |
| 94                                                                                                             | JOANNE SEOW                                                                                    | BOB                   | BOB, CACIB<br>BITCH                      |
|                                                                                                                | <b>SG.CH.A20.CH.PICCINO HIBISCUS</b>                                                           |                       |                                          |
|                                                                                                                | CH.CAVALIERLOVE PROUD N COOL - BRENDAMAY DON'T BE BLUE                                         |                       |                                          |
|                                                                                                                | IMP AUST. 18.09.2022. MRS S REEVE & MRS T CLIFT                                                |                       |                                          |
| <b><u>CHIHUAHUA (LONG COAT)</u></b>                                                                            |                                                                                                |                       |                                          |
| PUPPY DOG                                                                                                      |                                                                                                |                       |                                          |
| 95                                                                                                             | JOEY LIM JACK HOW                                                                              | RCC DOG,<br>RBOB      | RCC DOG                                  |
|                                                                                                                | <b>JOLICIOUS MOCHI "JIJI"</b>                                                                  |                       |                                          |
|                                                                                                                | JOLICIOUS DALE - JOILICIOUS RISING PHOENIX                                                     |                       |                                          |
|                                                                                                                | SW. J 31.07.2024. JOEY LIM JACK HOW                                                            |                       |                                          |
| INTERMEDIATE DOG                                                                                               |                                                                                                |                       |                                          |
| 96                                                                                                             | CHAU YAT WAH & HUTCH CHAU                                                                      | CC BITCH,<br>BOB      | CC BITCH, BOB,<br>CACIB BITCH            |
|                                                                                                                | <b>DREAMCASTLE'S HOMNAN</b>                                                                    |                       |                                          |
|                                                                                                                | DREAMCASTLE'S ONTONG MINI BLUE – DREAMCASTLE'S HOMNIL                                          |                       |                                          |
|                                                                                                                | IMP THAI. 14.03.2023. Araya Banchacharnchai                                                    |                       |                                          |

|                                             |                                                                     |  |                                          |
|---------------------------------------------|---------------------------------------------------------------------|--|------------------------------------------|
| <b><u>CHINESE CRESTED (HAIRLESS)</u></b>    |                                                                     |  |                                          |
| CHAMPION DOG (OPEN IN SKC SHOWS)            |                                                                     |  |                                          |
| 97                                          | RYAN SU                                                             |  | CC DOG, BOB                              |
|                                             | <b>AUST.CH.PENDER SAINT LAURENT</b>                                 |  | CC DOG, BOB,<br>CACIB DOG                |
|                                             | PENDER MAN IN THE MIRROR - CH PENDER DOLL HOUSE                     |  |                                          |
|                                             | IMP AUST. 13.11.2022. MRS K P PRENDERGAST                           |  |                                          |
| <b><u>FRENCH BULLDOG</u></b>                |                                                                     |  |                                          |
| OPEN DOG                                    |                                                                     |  |                                          |
| 98                                          | TAN CHUAN GUAN & KELVIN NG LIP SIANG                                |  | CC DOG,<br>BOW, BOB                      |
|                                             | <b>DARCLEE JACK DANIELS</b>                                         |  | CC DOG, BOW,<br>BOB, CACIB<br>DOG        |
|                                             | DARLEE EXTREME SATISFACTION - GOLD-SIERRA NOMINEE                   |  |                                          |
|                                             | IMP ROM. 02.12.2022 LUCAN CHRISTIAN & EUGENIA                       |  |                                          |
| INTERMEDIATE BITCH                          |                                                                     |  |                                          |
| 99                                          | TAN CHUAN GUAN & KELVIN NG LIP SIANG                                |  | CC BITCH                                 |
|                                             | <b>FRUSTYLE CALIFORNIA</b>                                          |  | CC BITCH,                                |
|                                             | DICAR I'M SPECIAL - FRUSTYLE DASHUTA                                |  |                                          |
|                                             | IMP RUS. 31.07.2023. SITNIKOVA T.V                                  |  |                                          |
| CHAMPION BITCH (CHAMPION OPEN IN SKC SHOWS) |                                                                     |  |                                          |
| 100                                         | ONG ENG HEOK                                                        |  | RBOB                                     |
|                                             | <b>SG.CH.AZO.CH.INT.CH.GRACE DE C.A.S VALLGA'S</b>                  |  | RBOB, CACIB<br>BITCH                     |
|                                             | DEL BOSO JORDAN - SCARLETT DE CANIPALMA                             |  |                                          |
|                                             | IMP PORT. 19.10.2018 VALEGA, CELSO ANDRE SANTOS                     |  |                                          |
| <b><u>HAVANESE</u></b>                      |                                                                     |  |                                          |
| JUNIOR DOG                                  |                                                                     |  |                                          |
| 101                                         | DIANA LIM                                                           |  | CC DOG, BOB,<br>BOW                      |
|                                             | <b>CHEZSDREAM ROCKY ROAD</b>                                        |  | CC DOG, BOB,<br>BOW, JUNIOR<br>CACIB DOG |
|                                             | MAURY FROM BOHEMICA LAND AT CHEZDREAM - ROSEMJO STRAWBERRY FIELDS   |  |                                          |
|                                             | IMP UK. 22.03.2024. MRS C A THOMPSON                                |  |                                          |
| JUNIOR DOG                                  |                                                                     |  |                                          |
| 102                                         | DIANA LIM                                                           |  | RCC DOG                                  |
|                                             | <b>CHEZSDREAM MINT HUMBUG</b>                                       |  | RCC DOG                                  |
|                                             | MAURY FROM BOHEMICA LAND AT CHEZDREAM - ROSEMJO STRAWBERRY FIELDS   |  |                                          |
|                                             | IMP UK. 22.03.2024. MRS C A THOMPSON                                |  |                                          |
| <b><u>LHASA APSO</u></b>                    |                                                                     |  |                                          |
| PUPPY BITCH                                 |                                                                     |  |                                          |
| 103                                         | STANLEY SHEN                                                        |  | RCC BITCH                                |
|                                             | <b>EGOISTE RATHER COFFEE THAN CUDDLES</b>                           |  | RCC BITCH                                |
|                                             | CH.TAI FANZA ALL INCLUSIVE - CH.EGOISTE CHAMPAGNE WISHES OF KAILASA |  |                                          |
|                                             | SW. 25.07.2024. STANLEY SHEN                                        |  |                                          |
| PUPPY BITCH                                 |                                                                     |  |                                          |
| 104                                         | STANLEY SHEN                                                        |  | CC BITCH,<br>BOW, BOB                    |
|                                             | <b>EGOISTE PENNY WISE POUND SNOBBISH</b>                            |  | CC BITCH, BOW                            |
|                                             | CH.TAI FANZA ALL INCLUSIVE - CH.EGOISTE CHAMPAGNE WISHES OF KAILASA |  |                                          |
|                                             | SW. 25.07.2024. STANLEY SHEN                                        |  |                                          |
| <b><u>PAPILLON</u></b>                      |                                                                     |  |                                          |
| CHAMPION DOG (CHAMPION OPEN IN SKC SHOWS)   |                                                                     |  |                                          |
| 105                                         | EUPHEMIA LEE EN HUEI                                                |  | RBOB                                     |
|                                             | <b>SG.CH.UP AND DOWN'S DON'T LOOK BACK</b>                          |  | BOB, CACIB<br>DOG                        |
|                                             | UP AND DOWN'S ALLO ALLO - GIGI DES AMIS DES PAPILLONS               |  |                                          |
|                                             | IMP NETHERLAND. 26.08.2022. C.G.M RUTTEN                            |  |                                          |

|                                                                            |                                                                                     |                  |                                    |
|----------------------------------------------------------------------------|-------------------------------------------------------------------------------------|------------------|------------------------------------|
| INTERMEDIATE BITCH                                                         |                                                                                     |                  |                                    |
| 106                                                                        | CHERLYN PECK & LIM ZHI HAO BERNARD                                                  | CC BITCH         | CC BITCH                           |
|                                                                            | <b>OLEACEAE GIRL IN WHITE IN THE WOODS</b>                                          |                  |                                    |
|                                                                            | SG.CH.MONT.CH.UP AND DOWN'S ZIGI STARDUST - INVANSE LAUGH OUT LOUD                  |                  |                                    |
|                                                                            | SW. 15.06.2023. LIM ZHI HAO BERNARD                                                 |                  |                                    |
| CHAMPION BITCH (CHAMPION OPEN IN SKC SHOWS)                                |                                                                                     |                  |                                    |
| 107                                                                        | JACQUELYNN KOH SIEW CHIN                                                            | BOB              | RBOB, CACIB BITCH                  |
|                                                                            | <b>SG.CH.PAPIRUNNERS WINGS OF ETERNITY</b>                                          |                  |                                    |
|                                                                            | PAPIRUNNERS SHADOW HUNTER - GER.CH.PAPIRUNNERS QUALIFYING BEAUTY                    |                  |                                    |
|                                                                            | IMP GER. 06.05.2022. JULIA VOGLER                                                   |                  |                                    |
| <b><u>PHALENE</u></b>                                                      |                                                                                     |                  |                                    |
| 108                                                                        | HO SEOW ENG JULIA                                                                   | - ABSENT -       | - ABSENT -                         |
|                                                                            | <b>IMAGINE DRAGONS</b>                                                              |                  |                                    |
|                                                                            | CH LA BEN PH BRASS RING - ELRAMS QUEEN OF BROKEN HEARTS SUI                         |                  |                                    |
|                                                                            | IMP ITA. 28.12.2023. EGLE DILDAITE                                                  |                  |                                    |
| <b><u>POODLE (MEDIUM)</u></b>                                              |                                                                                     |                  |                                    |
| CHAMPION DOG (OPEN IN SKC SHOWS)                                           |                                                                                     |                  |                                    |
| 109                                                                        | HUANG KAIMIN                                                                        | - ABSENT -       | - ABSENT -                         |
|                                                                            | <b>CN.CH.KANG YI SHI SHANG HAWA</b>                                                 |                  |                                    |
|                                                                            | ETERNAL CHINA TAP - CN.CH.KANG YI SHI SHANG REBECCA                                 |                  |                                    |
|                                                                            | IMP CN. 19.02.2022. KANG YI & WANG ZHIWEI                                           |                  |                                    |
| CHAMPION DOG (CHAMPION OPEN IN SKC SHOWS)                                  |                                                                                     |                  |                                    |
| 110                                                                        | SHARON LIM TSU IM                                                                   | BOB              | BOB, CACIB DOG                     |
|                                                                            | <b>SG.CH.COOL WHIP FROM CHAMARRE</b>                                                |                  |                                    |
|                                                                            | CH.CHAMARRE'S SPECIAL EDITION - CHAMARRE CHOCLAT DROP                               |                  |                                    |
|                                                                            | IMP NZL. 04.02.2023. P SAVILLE                                                      |                  |                                    |
| <b><u>POODLE (MINIATURE)</u></b>                                           |                                                                                     |                  |                                    |
| JUNIOR DOG                                                                 |                                                                                     |                  |                                    |
| 111                                                                        | ALEXIS TAN                                                                          | CC DOG, BOB, BOW | CC DOG, BOB, BOW, JUNIOR CACIB DOG |
|                                                                            | <b>SERENEPARK HEART OF GOLD</b>                                                     |                  |                                    |
|                                                                            | NT.G.CH.CH(KOR.KOR J.KOR W. KOR PM) SERENEPARK'S MAP OF THE SOUL - SHARE YOUR HEART |                  |                                    |
|                                                                            | IMP KOR. 28.01.2024. PARK, JUN-HEE                                                  |                  |                                    |
| INTERMEDIATE DOG (254 <sup>TH</sup> SKC & 45 <sup>TH</sup> FCI SHOWS ONLY) |                                                                                     |                  |                                    |
| 112                                                                        | SEE SEOW LING                                                                       |                  |                                    |
|                                                                            | <b>NOONBORA NATTO</b>                                                               |                  |                                    |
|                                                                            | GINZA OF NICE & OUTGOING FCI - MING LA OF NICE & OUTGOING FCI                       |                  |                                    |
|                                                                            | SW. 01.08.2023. PARK SANG HUN                                                       |                  |                                    |
| JUNIOR BITCH (SG WHELPED IN SKC SHOWS)                                     |                                                                                     |                  |                                    |
| 113                                                                        | LONG HUI JUAN RACHEL                                                                | CC BITCH, RBOB   | CC BITCH, RBOB                     |
|                                                                            | <b>DIAMONDROCKSTAR ARA</b>                                                          |                  |                                    |
|                                                                            | BEETHOVEN OF NICE & OUTGOING FCI - NICE & OUTGOING TW JASMIN                        |                  |                                    |
|                                                                            | SW. 15.05.2024. LONG HUI JUAN RACHEL                                                |                  |                                    |
| <b><u>POODLE (TOY)</u></b>                                                 |                                                                                     |                  |                                    |
| INTERMEDIATE DOG (SG WHELPED IN SKC SHOWS)                                 |                                                                                     |                  |                                    |
| 114                                                                        | PARK SANG HUN                                                                       | RCC DOG          |                                    |
|                                                                            | <b>NOONBORA HONEY COMB MAKGEOLLI</b>                                                |                  |                                    |
|                                                                            | SG.CH.KOR.CH.SMASHPARK FOLLOW YOUR SOUL - NOONBORA MULAN                            |                  |                                    |
|                                                                            | SW. 07.11.2023. PARK SANG HUN                                                       |                  |                                    |



|                                           |                                                                        |  |                                       |
|-------------------------------------------|------------------------------------------------------------------------|--|---------------------------------------|
| OPEN DOG                                  |                                                                        |  |                                       |
| 115                                       | LONG HUI JUAN RACHEL                                                   |  | CC DOG,<br>CC DOG, RBOB,<br>CACIB DOG |
|                                           | <b>BEETHOVEN OF NICE &amp; OUTGOING FCI</b>                            |  |                                       |
|                                           | EDWARD OF LIU CHUAN FENG KENNEL - NICE & OUTGOING FCI SILVER CAT       |  |                                       |
|                                           | IMP TWN. 09.07.2021. CHOI JEE-YOUNG                                    |  |                                       |
| CHAMPION DOG (CHAMPION OPEN IN SKC SHOWS) |                                                                        |  |                                       |
| 116                                       | CHAU YAT WAH & HUTCH CHAU                                              |  | BOB                                   |
|                                           | <b>SG.CH.VOLAR TIM MICHAEL OF VOLAR</b>                                |  |                                       |
|                                           | BARBARA CHINA BAKMAKA OF VOLAR - BARBARA CHINA VOLAR TEKLA             |  |                                       |
|                                           | IMP CN . 07.02.2022. LIANG LIXIAO                                      |  |                                       |
| CHAMPION BITCH (OPEN IN SKC SHOWS)        |                                                                        |  |                                       |
| 117                                       | KATHERINE CHANG                                                        |  | CC BITCH,<br>BOW, RBOB                |
|                                           | <b>KOR.W.CH.CH(KOR)THE GOODBOY BLACK SWAN</b>                          |  |                                       |
|                                           | SMASH JP SUPEREME - THE GOODBOY BLACK CHEETAH                          |  |                                       |
|                                           | IMP KOR. 11.06.2022. YOO, DONG-SEOK                                    |  |                                       |
| <b><u>SHIH TZU</u></b>                    |                                                                        |  |                                       |
| JUNIOR DOG                                |                                                                        |  |                                       |
| 118                                       | JOEY LIM JACK HOW                                                      |  | CC DOG,<br>RBOB                       |
|                                           | <b>JOLICIOUS ONE AND ONLY "BUGATTI"</b>                                |  |                                       |
|                                           | SG.CH.A2O.CH.INT.CH.LUCK HONEY "KROVANH" - JOLICIOUS WINTER CRYSTALINE |  |                                       |
|                                           | SW. 11.05.2024. JOEY LIM JACK HOW                                      |  |                                       |
| JUNIOR BITCH                              |                                                                        |  |                                       |
| 119                                       | LINNA PEH                                                              |  | CC BITCH,<br>BOW, BOB                 |
|                                           | <b>FREAKSHOW JAMAICA AT BAEKTZUS</b>                                   |  |                                       |
|                                           | FREAKSHOW CASSETTE - FREAKSHOW BURNING                                 |  |                                       |
|                                           | IMP ESP. 09.03.2024. NICOLAS HERRERO                                   |  |                                       |

**GROUP 9 SPECIALS**

**254<sup>TH</sup> SKC CHAMPIONSHIP DOG SHOW**

| BREED                         | BEST OF BREED | RES BEST OF BREED                                                                                                                                   | PUPPY | JUNIOR | INTERMEDIATE | SG WHELPED | OPEN |
|-------------------------------|---------------|-----------------------------------------------------------------------------------------------------------------------------------------------------|-------|--------|--------------|------------|------|
| BICHON FRISE                  | 90            | 91                                                                                                                                                  | 89    | -      | 90           | -          | 88   |
| CAVALIER KING CHARLES SPANIEL | 94            | 93                                                                                                                                                  | -     | 93     | -            | -          | 94   |
| CHIHUAHUA (LC)                | 96            | 95                                                                                                                                                  | 95    | -      | 96           | -          | -    |
| CHINESE CRESTED (HAIRLESS)    | 97            | -                                                                                                                                                   | -     | -      | -            | -          | 97   |
| FRENCH BULLDOG                | 98            | 100                                                                                                                                                 | -     | -      | 99           | -          | 98   |
| HAVANESE                      | 101           | 102                                                                                                                                                 | -     | 101    | -            | -          | -    |
| LHASA APSO                    | 104           | 103                                                                                                                                                 | 104   | -      | -            | -          | -    |
| PAPILLON                      | 107           | 105                                                                                                                                                 | -     | -      | 106          | -          | 107  |
| PHALENE                       |               |                                                                                                                                                     |       |        |              |            |      |
| POODLE (MEDIUM)               | 110           | -                                                                                                                                                   | -     | -      | -            | -          | 110  |
| POODLE (MINIATURE)            | 111           | 113                                                                                                                                                 | -     | 111    | -            | 113        | -    |
| POODLE (TOY)                  | 116           | 117                                                                                                                                                 | -     | -      | -            | 114        | 116  |
| SHIH TZU                      | 119           | 118                                                                                                                                                 | -     | 119    | -            | -          | -    |
|                               |               |                                                                                                                                                     |       |        |              |            |      |
| BEST EXHIBIT IN GROUP         | 90            | -                                                                                                                                                   | 89    | 119    | 90           | 114        | 110  |
| 2ND BEST EXHIBIT IN GROUP     | 110           | <div style="border: 1px solid black; padding: 5px; width: fit-content; margin: auto;">                     Judge's Signature                 </div> |       |        |              |            |      |
| 3RD BEST EXHIBIT IN GROUP     | 98            |                                                                                                                                                     |       |        |              |            |      |

**GROUP 9 SPECIALS**

**45<sup>TH</sup> FCI INTERNATIONAL CACIB SHOW**

| BREED                         | BEST OF BREED | RES BEST OF BREED                                                                                                                                    | PUPPY | JUNIOR | INTERMEDIATE | OPEN | CHAMPION |
|-------------------------------|---------------|------------------------------------------------------------------------------------------------------------------------------------------------------|-------|--------|--------------|------|----------|
| BICHON FRISE                  | 88            | 91                                                                                                                                                   | 89    | -      | 90           | 88   | 91       |
| CAVALIER KING CHARLES SPANIEL | 94            | 93                                                                                                                                                   | -     | 93     | -            | -    | -        |
| CHIHUAHUA (LC)                | 96            | -                                                                                                                                                    | 95    | -      | 96           | -    | -        |
| CHINESE CRESTED (HAIRLESS)    | 97            | -                                                                                                                                                    | -     | -      | -            | -    | 97       |
| FRENCH BULLDOG                | 98            | 100                                                                                                                                                  | -     | -      | 99           | 98   | 100      |
| HAVANESE                      | 101           | 102                                                                                                                                                  | -     | 101    | -            | -    | -        |
| LHASA APSO                    | -             | -                                                                                                                                                    | 104   | -      | -            | -    | -        |
| PAPILLON                      | 105           | 107                                                                                                                                                  | -     | -      | 106          | 105  | 107      |
| PHALENE                       |               |                                                                                                                                                      |       |        |              |      |          |
| POODLE (MEDIUM)               | 110           | -                                                                                                                                                    | -     | -      | -            | -    | 110      |
| POODLE (MINIATURE)            | 111           | -                                                                                                                                                    | -     | 111    | -            | -    | -        |
| POODLE (TOY)                  | 117           | 115                                                                                                                                                  | -     | -      | 114          | 115  | 117      |
| SHIH TZU                      | 118           | 119                                                                                                                                                  | -     | 118    | -            | -    | -        |
|                               |               |                                                                                                                                                      |       |        |              |      |          |
| BEST EXHIBIT IN GROUP         | 105           | -                                                                                                                                                    | 89    | 118    | 99           | 105  | 117      |
| 2ND BEST EXHIBIT IN GROUP     | 117           | <div style="border: 1px solid black; padding: 10px; width: fit-content; margin: auto;">                     Judge's Signature                 </div> |       |        |              |      |          |
| 3RD BEST EXHIBIT IN GROUP     | 110           |                                                                                                                                                      |       |        |              |      |          |

## GROUP 10

| <b><u>AFGHAN HOUND</u></b>                          |                                                       | 254 <sup>TH</sup> SKC | 45 <sup>TH</sup> FCI |
|-----------------------------------------------------|-------------------------------------------------------|-----------------------|----------------------|
| CHAMPION DOG (OPEN IN SKC SHOWS)                    |                                                       |                       |                      |
| 120                                                 | JERRY KOH                                             | - ABSENT -            | - ABSENT -           |
|                                                     | <b>AM.CH.POLO'S WHERE BLING IS KING</b>               |                       |                      |
|                                                     | GCH.KINGSLEAH HEART OF GOLD - GCH.POLO'S AREBAH DERCI |                       |                      |
|                                                     | IMP CAN. 22.06.2022. LORIANNE AMADEO                  |                       |                      |
| CHAMPION BITCH (CHAMPION OPEN IN SKC SHOWS)         |                                                       |                       |                      |
| 121                                                 | JERRY KOH                                             | - ABSENT -            | - ABSENT -           |
|                                                     | <b>SG.CH.AM.CH.POLO'S BLACK PEARL</b>                 |                       |                      |
|                                                     | GCH.XENOS COPPER NITE OF POLO - CH.POLO PEEKA BLUE    |                       |                      |
|                                                     | IMP CAN. 10.06.2019 LORIANNE AMADEO                   |                       |                      |
| <b><u>ITALIAN GREYHOUND</u></b>                     |                                                       |                       |                      |
| CHAMPION BITCH (CHAMPION INTERMEDIATE IN SKC SHOWS) |                                                       |                       |                      |
| 122                                                 | HAN SONG JIAO                                         | BOB                   | BOB, CACIB<br>BITCH  |
|                                                     | <b>SG.CH.OPHIS INDIGO ROSE</b>                        |                       |                      |
|                                                     | OPHIS PAI – OPHIS OPERA OLIMPIA                       |                       |                      |
|                                                     | IMP ITALY. 01.06.2023. PIERPAOLO PICA                 |                       |                      |
| <b><u>WHIPPET</u></b>                               |                                                       |                       |                      |
| JUNIOR DOG                                          |                                                       |                       |                      |
| 123                                                 | EUPHEMIA LEE EN HUEI                                  | CC DOG, BOB           | CC DOG, BOB          |
|                                                     | <b>UPTEMPO BARAONDA</b>                               |                       |                      |
|                                                     | COURTBORNE SHELDON - UPTEMPO BLOWING IN               |                       |                      |
|                                                     | IMP ITA. 21.12.2023. GIOVANNI LIGUORI                 |                       |                      |

**GROUP 10 SPECIALS**  
**254<sup>TH</sup> SKC CHAMPIONSHIP DOG SHOW**

| BREED                                 | BEST OF BREED | RES BEST OF BREED                                                                                  | PUPPY | JUNIOR | INTERMEDIATE | SG WHELPED | OPEN |  |
|---------------------------------------|---------------|----------------------------------------------------------------------------------------------------|-------|--------|--------------|------------|------|--|
| AFGHAN HOUND                          |               |                                                                                                    |       |        |              |            |      |  |
| ITALIAN GREYHOUND                     | 122           | -                                                                                                  | -     | -      | 122          | -          | -    |  |
| WHIPPET                               | 123           | -                                                                                                  | -     | 123    | -            | -          | -    |  |
|                                       |               |                                                                                                    |       |        |              |            |      |  |
| BEST EXHIBIT IN GROUP                 | 123           | -                                                                                                  | -     | 123    | 122          | -          | -    |  |
| 2 <sup>ND</sup> BEST EXHIBIT IN GROUP | 122           | -                                                                                                  | -     | -      | -            | -          | -    |  |
|                                       |               | <div style="border: 1px solid black; padding: 5px; display: inline-block;">Judge's Signature</div> |       |        |              |            |      |  |
|                                       |               |                                                                                                    |       |        |              |            |      |  |

**GROUP 10 SPECIALS**  
**45<sup>TH</sup> FCI INTERNATIONAL CACIB SHOW**

| BREED                                 | BEST OF BREED | RES BEST OF BREED                                                                                  | PUPPY | JUNIOR | INTERMEDIATE | OPEN | CHAMPION |
|---------------------------------------|---------------|----------------------------------------------------------------------------------------------------|-------|--------|--------------|------|----------|
| AFGHAN HOUND                          |               |                                                                                                    |       |        |              |      |          |
| ITALIAN GREYHOUND                     | 122           | -                                                                                                  | -     | -      | -            | -    | 122      |
| WHIPPET                               | 123           | -                                                                                                  | -     | 123    | -            | -    | -        |
|                                       |               |                                                                                                    |       |        |              |      |          |
| BEST EXHIBIT IN GROUP                 | 123           | -                                                                                                  | -     | 123    | -            | -    | 122      |
| 2 <sup>ND</sup> BEST EXHIBIT IN GROUP | 122           |                                                                                                    |       |        |              |      |          |
|                                       |               | <div style="border: 1px solid black; padding: 5px; display: inline-block;">Judge's Signature</div> |       |        |              |      |          |
|                                       |               |                                                                                                    |       |        |              |      |          |

# 254<sup>TH</sup> SKC CHAMPIONSHIP DOG SHOW

## GENERAL SPECIALS & BEST IN SHOW

| GROUP                              | BEST IN GROUP | 2 <sup>ND</sup> BEST IN GROUP                                                                                                            | 3 <sup>RD</sup> BEST IN GROUP | BEST PUPPY IN GROUP | BEST JUNIOR IN GROUP | BEST INTER-MEDIATE IN GROUP | BEST SG WHELPED IN GROUP | BEST OPEN IN GROUP | BEST VETERAN IN GROUP |
|------------------------------------|---------------|------------------------------------------------------------------------------------------------------------------------------------------|-------------------------------|---------------------|----------------------|-----------------------------|--------------------------|--------------------|-----------------------|
| GROUP 1                            | 04            | 30                                                                                                                                       | 17                            | 01                  | 11                   | 12                          | 29                       | 04                 | 19                    |
| GROUP 2                            | 39            | 40                                                                                                                                       | 32                            | 41                  | 36                   | 43                          | 39                       | 40                 | -                     |
| GROUP 3                            | 48            | 50                                                                                                                                       | 45                            | -                   | 47                   | 48                          | -                        | 40                 | -                     |
| GROUP 4                            | 54            | -                                                                                                                                        | -                             | -                   | -                    | 54                          | -                        | -                  | -                     |
| GROUP 5                            | 56            | 72                                                                                                                                       | 67                            | 71                  | 68                   | 69                          | -                        | 56                 | -                     |
| GROUP 7                            | 73            | 74                                                                                                                                       | -                             | -                   | -                    | 74                          | -                        | 73                 | -                     |
| GROUP 8                            | 83            | 76                                                                                                                                       | 82                            | 85                  | -                    | 76                          | 83                       | -                  | -                     |
| GROUP 9                            | 90            | 110                                                                                                                                      | 98                            | 89                  | 119                  | 90                          | 114                      | 110                | -                     |
| GROUP 10                           | 123           | 122                                                                                                                                      | -                             | -                   | 123                  | 122                         | -                        | -                  | -                     |
|                                    |               |                                                                                                                                          |                               |                     |                      |                             |                          |                    |                       |
|                                    |               |                                                                                                                                          |                               |                     |                      |                             |                          |                    |                       |
| <b>BEST IN SHOW</b>                | <b>56</b>     | <b>GENERAL SPECIAL BEST IN SHOW</b>                                                                                                      |                               | 84                  | 119                  | 90                          | 39                       | 56                 | 19                    |
| <b>2<sup>ND</sup> BEST IN SHOW</b> | <b>90</b>     | <b>RESERVE GENERAL SPECIALS</b>                                                                                                          |                               | 71                  | 11                   | 43                          | 83                       | 04                 | -                     |
| <b>3<sup>RD</sup> BEST IN SHOW</b> | <b>04</b>     | <div style="border: 1px solid black; padding: 5px; display: inline-block;">                     Judge's Signature                 </div> |                               |                     |                      |                             |                          |                    |                       |

# 45<sup>TH</sup> FCI INTERNATIONAL CACIB SHOW

## GENERAL SPECIALS & BEST IN SHOW

| GROUP                              | BEST IN GROUP | 2 <sup>ND</sup> BEST IN GROUP                                                                                                            | 3 <sup>RD</sup> BEST IN GROUP | BEST PUPPY IN GROUP | BEST JUNIOR IN GROUP | BEST INTER-MEDIATE IN GROUP | BEST OPEN IN GROUP | BEST CHAMPION IN GROUP | BEST VETERAN IN GROUP |
|------------------------------------|---------------|------------------------------------------------------------------------------------------------------------------------------------------|-------------------------------|---------------------|----------------------|-----------------------------|--------------------|------------------------|-----------------------|
| GROUP 1                            | 17            | 02                                                                                                                                       | 28                            | 01                  | 23                   | 02                          | 17                 | 02                     | 19                    |
| GROUP 2                            | 39            | 32                                                                                                                                       | 33                            | 44                  | 36                   | 43                          | -                  | 39                     | -                     |
| GROUP 3                            | 48            | 45                                                                                                                                       | 50                            | -                   | 46                   | 48                          | 51                 | 45                     | -                     |
| GROUP 4                            | 54            | -                                                                                                                                        | -                             | -                   | -                    | 54                          | -                  | -                      | -                     |
| GROUP 5                            | 56            | 67                                                                                                                                       | 64                            | 62                  | 64                   | -                           | 69                 | 56                     | -                     |
| GROUP 7                            | 73            | 74                                                                                                                                       | -                             | -                   | -                    | 74                          | -                  | 73                     | -                     |
| GROUP 8                            | 82            | 77                                                                                                                                       | 76                            | 85                  | -                    | -                           | 77                 | 82                     | -                     |
| GROUP 9                            | 105           | 117                                                                                                                                      | 110                           | 89                  | 118                  | 99                          | 105                | 117                    | -                     |
| GROUP 10                           | 123           | 122                                                                                                                                      | -                             | -                   | 123                  | -                           | -                  | 122                    | -                     |
|                                    |               |                                                                                                                                          |                               |                     |                      |                             |                    |                        |                       |
|                                    |               |                                                                                                                                          |                               |                     |                      |                             |                    |                        |                       |
| <b>BEST IN SHOW</b>                | <b>17</b>     | <b>GENERAL SPECIAL BEST IN SHOW</b>                                                                                                      |                               | 85                  | 123                  | 48                          | 02                 | 17                     | 19                    |
| <b>2<sup>ND</sup> BEST IN SHOW</b> | <b>48</b>     | <b>RESERVE GENERAL SPECIALS</b>                                                                                                          |                               | 89                  | 64                   | 54                          | 105                | 56                     | -                     |
| <b>3<sup>RD</sup> BEST IN SHOW</b> | <b>56</b>     | <div style="border: 1px solid black; padding: 5px; display: inline-block;">                     Judge's Signature                 </div> |                               |                     |                      |                             |                    |                        |                       |

## MINOR PUPPY

### **SHETLAND SHEEPDOG**

- 201 AMANDA LIM SI MIN  
**MAPLEHAVEN SWEET ARABICA**  
SG.CH.MAPLEHAVEN SILVERMYTH GRAND JUBILEE CELEBRATION -  
SILVERAY DREAM CATCHER  
SW. 21.11.2024. AMANDA LIM SI MIN
- 202 AMANDA LIM SI MIN  
**MAPLEHAVEN COLD BREW**  
SG.CH.MAPLEHAVEN SILVERMYTH GRAND JUBILEE CELEBRATION -  
SILVERAY DREAM CATCHER  
SW. 21.11.2024. AMANDA LIM SI MIN
- 203 HUBERT TAN KAH IMM  
**HUBSVILLE REAPER**  
KOR.CH.SG.CH.JOY OF WITH PETHOUSE - HUBSVILLE BANNER OF LOVE  
SW. 24.08.2024. HUBERT TAN KAH IMM
- 204 HUBERT TAN KAH IMM  
**HUBSVILLE BLOCK BUSTER**  
KOR.CH.SG.CH.JOY OF WITH PETHOUSE - HUBSVILLE BANNER OF LOVE  
SW. 24.08.2024. HUBERT TAN KAH IMM

### **MINIATURE SCHNAUZER**

- 205 KEITH CHEOW  
**VALEHAVEN DAYLIGHT GLITTERS**  
SG.CH.A2O.CH.INT.CH.JOKERLAND'S BRIGHT FUTURE - CH.JOKERLAND'S  
CLIMBING ROSE  
SW. 06.09.2024. KEITH CHEOW
- 206 KEITH CHEOW  
**VALEHAVEN MIDNIGHT BLEU**  
SG.CH.A2O.CH.INT.CH.JOKERLAND'S BRIGHT FUTURE - CH.JOKERLAND'S  
CLIMBING ROSE  
SW. 06.09.2024. KEITH CHEOW

### **CHOW CHOW**

- 207 NGIAM YUAN SONG DAIMLER  
**TIANQUAN GREATLY BLESSED KAIROS**  
LONG FENG MR BIG AT TIANQUAN - NYAN CHOW'S KAMUISAURUS JAPONICUS AT  
TIANQUAN  
SW. 08.10.2024. NGIAM YUAN SONG DAIMLER
- 208 NGIAM YUAN SONG DAIMLER  
**TIANQUAN HIGHLY FAVOURED CHARIS**  
LONG FENG MR BIG AT TIANQUAN - NYAN CHOW'S KAMUISAURUS JAPONICUS AT  
TIANQUAN  
SW. 08.10.2024. NGIAM YUAN SONG DAIMLER
- 209 NGIAM YUAN SONG DAIMLER  
**TIANQUAN DEEPLY LOVED QARAH**  
LONG FENG MR BIG AT TIANQUAN - NYAN CHOW'S KAMUISAURUS JAPONICUS AT  
TIANQUAN  
SW. 08.10.2024. NGIAM YUAN SONG DAIMLER



## **FINNISH LAPPHUND**

- 210    TEOH YIN XUAN  
      **MOONTYX THE FIRST AVENGER**  
      SG.CH.INT.CH.HR.CH.RSM.JCH.IT.JCH.SLO.JCH.IT.CH.AEGIRSSON RAJAH -  
      SG.CH.INT.CH.IT.CH.SLO.CH.IT.JCH.RSM.JCH.CKAMOMILLA OF BULL'S ANGEL  
      SW. 20.10.2024. TEOH YIN XUAN
- 211    TEOH YIN XUAN  
      **MOONTYX THE INCREDIBLE HULK**  
      SG.CH.INT.CH.HR.CH.RSM.JCH.IT.JCH.SLO.JCH.IT.CH.AEGIRSSON RAJAH -  
      SG.CH.INT.CH.IT.CH.SLO.CH.IT.JCH.RSM.JCH.CKAMOMILLA OF BULL'S ANGEL  
      SW. 20.10.2024. TEOH YIN XUAN

## **GOLDEN RETRIEVER**

- 212    HUBERT TAN & JEFFREY CHUA  
      **HUBSVILLENJJ THE BEAUTY OF CLEO**  
      MAXIMUS LEGENDS PANTHEON BARBOUR GOLD'S - SG.CH.HUBSVILLENJJ  
      OH WORLDY EMMA  
      SW. 31.08.2024. HUBERT TAN & JEFFREY CHUA
- 213    HUBERT TAN & JEFFREY CHUA  
      **HUBSVILLENJJ GOODTIME SHOWTIME**  
      MAXIMUS LEGENDS PANTHEON BARBOUR GOLD'S - SG.CH.HUBSVILLENJJ  
      OH WORLDY EMMA  
      SW. 31.08.2024. HUBERT TAN & JEFFREY CHUA
- 214    NICHOL TAN LIAT HAW  
      **SILVERWIND DANCING WITH WOLF**  
      SILVERWIND SCOUT THE MASTER CHIEF - SILVERWIND FLY WITH WIND  
      SW. 14.09.2024. NICHOL TAN LIAT HAW

## **CHIHUAHUA (LC)**

- 215    ALVIN CHEN  
      **CHIWOVOW HULKBUSTER**  
      SG.CH.BRAMVER'S TURBO - SG.CH.NORA-PL DI SAN GIMIGNANO  
      SW. 21.10.2024. ALVIN CHEN

## **FRENCH BULLDOG**

- 216    NICHOL TAN LIAT HAW  
      **WILDMAX KING KONG**  
      WILDMAX MIGHTY JOE - WILDMAX ALICE IN WONDERLAND  
      SW. 06.11.2024. NICHOL TAN

## **PAPILLON**

- 217    BERNARD LIM ZHI HAO  
      **OLEACEAE IT'S NOT MY FAULT IT BLEW UP**  
      SG.CH.ELRAM'S XEDOS AT VISSIDARTE SUI (FCI) - OLEACEAE TWO WOMEN  
      IN THE WOODS  
      SW. 13.09.2024. BERNARD LIM ZHI HAO
- 218    BERNARD LIM ZHI HAO  
      **OLEACEAE JACK JACK NUM NUM COOKIES**  
      SG.CH.ELRAM'S XEDOS AT VISSIDARTE SUI (FCI) - OLEACEAE TWO WOMEN  
      IN THE WOODS  
      SW. 13.09.2024. BERNARD LIM ZHI HAO
- 219    BERNARD LIM ZHI HAO  
      **OLEACEAE I NEVER LOOK BACK, DARLING**  
      SG.CH.ELRAM'S XEDOS AT VISSIDARTE SUI (FCI) - OLEACEAE TWO WOMEN  
      IN THE WOODS  
      SW. 13.09.2024. BERNARD LIM ZHI HAO

**POODLE (TOY)**

220 CHAU YAT WAH & HUTCH CHAU  
**PAWFESSIONA XXIV MIO**  
CHUONP OF LIU CHUAN FENG KENNEL - KE KE VII  
SW. 07.10.2024. CHAU YAT WAH & HUTCH CHAU

**ITALIAN GREYHOUND**

221 LOUISA TAN  
**ODORICORSA MEET ME AT THE APT.**  
ACKRA'S GIACOMO - SG.CH.UNA CORDA SUPER CHARTY FCI  
SW. 10.09.2024. LOUISA TAN

**WHIPPET**

222 EUPHEMIA LEE  
**KANATI FLY ME TO THE MOON**  
KANATI BORN OF THE BLOOD MOON - CH. RAWKSTAR GO FORTH AND  
PROSPER  
IMP AUST. 30.08.2024. VANESSA TAYLOR

**253<sup>RD</sup> SKC**

**13<sup>TH</sup> A2OCS**

|                          |   |       |       |
|--------------------------|---|-------|-------|
| BEST MINOR PUPPY         | : | _____ | _____ |
| RESERVE BEST MINOR PUPPY | : | _____ | _____ |
| THIRD BEST MINOR PUPPY   | : | _____ | _____ |

**254<sup>TH</sup> SKC**

**45<sup>TH</sup> FCI**

|                          |   |     |     |
|--------------------------|---|-----|-----|
| BEST MINOR PUPPY         | : | 213 | 218 |
| RESERVE BEST MINOR PUPPY | : | 222 | 220 |
| THIRD BEST MINOR PUPPY   | : | 207 | 207 |

## **JUNIOR HANDLER COMPETITION**

- 301 YU HARIN - KOR.CH.THAI.CH.SG.GRCH.SILVERAY DANDY BOY (SHETLAND SHEEPDOG)  
302 YU RION - SG.CH.KOR.CH.PHIL.CH.A2O.CH.INT.CH.SILVERAY SWEETHEART OF MAPLEHAVEN (SHETLAND SHEEPDOG)  
303 ISAIAH KAYMAN PUAH SG.CH.PICCINO HIBISCUS (CAVALIAR KING CHARLES SPANIEL)  
304 HANNAH TAN - VALEHAVEN LITTLE ROSARIO (MINIATURE SCHNAUZER)  
305 BRIELLE TAN - VALEHAVEN HIRO FIDELIS (MINIATURE SCHNAUZER)  
306 SARAH PARK - SG.CH.NOOBORA STELLA FJ (TOY POODLE)  
307 HANNAH PARK - NOONBORA BAM MAKGEOLLI (TOY POODLE)  
308 FAITH CHEOW - SG.CH.CHALEE & LIMSKY LOVEY DOVEY LANA (POMERANIAN)  
309 KIERA - SG.CH.AM.CH.POLO'S BLACK PEARL (AFGHAN HOUND)

### **253<sup>RD</sup> SKC**

### **13<sup>TH</sup> A2OCS**

|                             |   |       |       |
|-----------------------------|---|-------|-------|
| BEST JUNIOR HANDLER         | : | _____ | _____ |
| RESERVE BEST JUNIOR HANDLER | : | _____ | _____ |
| THIRD BEST JUNIOR HANDLER   | : | _____ | _____ |

### **254<sup>TH</sup> SKC**

### **45<sup>TH</sup> FCI**

|                             |   |     |     |
|-----------------------------|---|-----|-----|
| BEST JUNIOR HANDLER         | : | 308 | 309 |
| RESERVE BEST JUNIOR HANDLER | : | 309 | 308 |
| THIRD BEST JUNIOR HANDLER   | : | 302 | 303 |

